

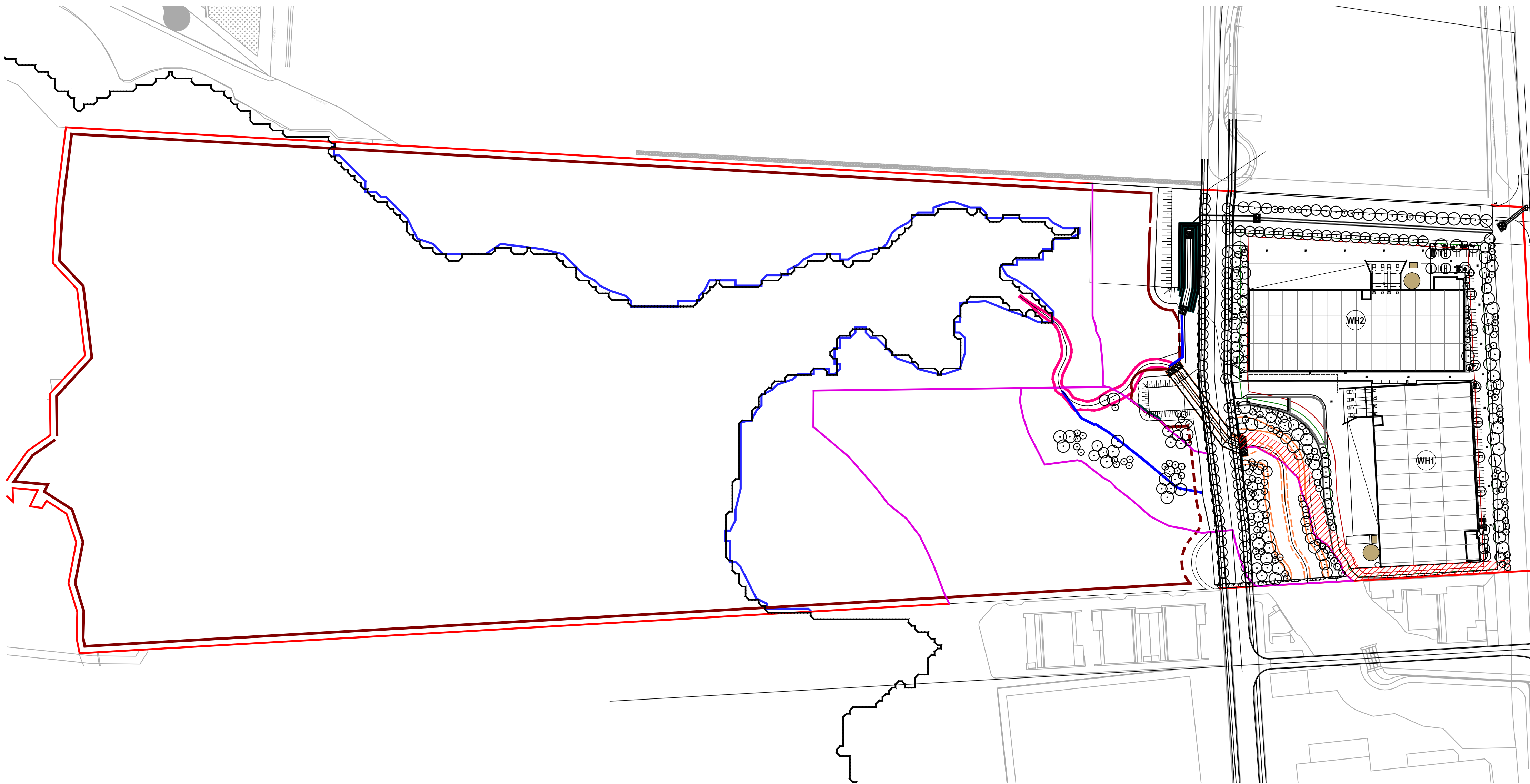
West Yiribana Logistics Estate

771-797 Mamre Road, Kemps Creek, NSW

Landscape Development Application

Drawing Schedule

Drawing Number	Drawing Title	Scale
000	Landscape Coversheet	As Shown
001	Tree Canopy Coverage	1:750
002	Plant Schedule	N/A
100	Landscape Master Plan	1:1500
101	Landscape Plan	1:250
102	Landscape Plan	1:250
103	Landscape Plan	1:250
104	Landscape Plan	1:250
105	Landscape Plan	1:250
106	Landscape Plan	1:250
107	Landscape Detail Plan	1:100
108	Landscape Detail Plan	1:100
501	Landscape Details	As Shown
502	Matrix Planting Details	As Shown
503	Matrix Planting Details	As Shown
504	Landscape Details	As Shown
505	Landscape Specification	N/A
601	Landscape Section	As Shown
602	Landscape Section	As Shown
603	Landscape Section	As Shown
604	Landscape Section	As Shown
605	Landscape Section	As Shown



Site Plan | Scale 1:2000 @A1

NOT FOR CONSTRUCTION

© 2021 Site Image (NSW) Pty Ltd ABN 44 801 262 380 as agent for Site Image NSW Partnership. All rights reserved. This drawing is copyright and shall not be reproduced or copied in any form or by any means (graphic, electronic or mechanical including photocopy) without the written permission of Site Image (NSW) Pty Ltd. Any license, expressed or implied, to use this document for any purpose what so ever is restricted to the terms of the written agreement between Site Image (NSW) Pty Ltd and the instructing party.

The contractor shall check and verify all work on site (including work by others) before commencing the landscape installation. Any discrepancies are to be reported to the Project Manager or Landscape Architect prior to commencing work. Do not scale this drawing. Any required dimensions not shown shall be referred to the Landscape Architect for confirmation.

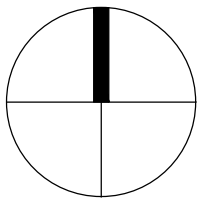
E	For Comment	CS	NM	06.02.2024
D	Development Application	LH	NM	28.07.2023
C	For Development Application	CK	NM	15.12.2022
B	For Coordination	LW	NM	29.11.2022
A	Development Application	LW	NM	25.08.2022
Issue	Revision Description	Drawn	Check	Date

Legend



Client
The GPT Group

Project
West Yiribana Logistics Estate
771-797 Mamre Road,
Kemps Creek NSW



Drawing Name
Landscape Coversheet

Development Application

Scale	Drawing Number	Issue
Job Number	SS22-5024	000 E



© 2021 Site Image (NSW) Pty Ltd ABN 44 801 262 380 as agent for Site Image NSW Partnership. All rights reserved. This drawing is copyright and shall not be reproduced or copied in any form or by any means (graphic, electronic or mechanical including photocopy) without the written permission of Site Image (NSW) Pty Ltd. Any license, expressed or implied, to use this document for any purpose what so ever is restricted to the terms of the written agreement between Site Image (NSW) Pty Ltd and the instructing party.

The contractor shall check and verify all work on site (including work by others) before commencing the landscape installation. Any discrepancies are to be reported to the Project Manager or Landscape Architect prior to commencing work. Do not scale this drawing. Any required dimensions not shown shall be referred to the Landscape Architect for confirmation.

Issue	Revision Description
E	For Comment
D	Development Application
C	For Development Application
B	For Coordination
A	Development Application

CS	NM	06.02.2024
LH	NM	28.07.2023
CK	NM	15.12.2022
LW	NM	29.11.2022
LW	NM	25.08.2022
Draw	Check	Date

Legend

Site Boundary

Proposed Trees

Tree Canopy Coverage

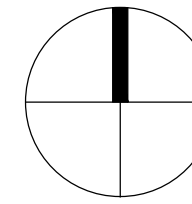
Existing Trees to be Removed

Defendable Space to Vegetation in RE1 Corridor

SITE IMAGE
Landscape Architects
Level 1, 3-5 Baptist Street
Redfern NSW 2016
Australia
Tel: (61 2) 8332 5600
Fax: (61 2) 9698 2877
www.siteimage.com.au

Client
The GPT Group

Project
West Yiribana Logistics Estate
771-797 Mamre Road,
Kemps Creek NSW



Drawing Name
Canopy Coverage Plan

Scale 1:750 @ A1
Job Number
SS22-5024

0 5 10 25 50m
Drawing Number
Issue

001 E

Code	Botanic Name	Common Name	Mature Size (h x w) (m)	Density	Density	Best practice soil volumes (m ³)
TREES						
Ae	<i>Alphitonia excelsa</i>	Red Ash	20 x 9	100L	As Shown	22.7
Ac	<i>Angophora costata</i>	Smooth Barked Apple	20 x 9	100L	As Shown	22.7
Af	<i>Angophora floribunda</i>	Rough barked Apple	17 x 7	100L	As Shown	22.7
Bm	<i>Backhousia myrtifolia</i>	Grey Myrtle	4 x 3	100L	As Shown	10.25
Ca	<i>Cupaniopsis anacardioides</i>	Tuckeroo	8 x 7	100L	As Shown	10.25
Cm	<i>Corymbia maculata</i>	Spotted Gum	30 x 8	100L	As Shown	34.75
Ea	<i>Eucalyptus amplifolia</i>	Cabbage Gum	30 x 8	100L	As Shown	34.75
Ec	<i>Eucalyptus crebra</i>	Narrow Leaved Iron Bark	35 x 10	100L	As Shown	34.75
Ee	<i>Eucalyptus eugenioides</i>	Thin leaved stringybark	20 x 8	100L	As Shown	22.7
Ef	<i>Eucalyptus fibrosa</i>	Red Ironbark	35 x 7	100L	As Shown	34.75
Emo	<i>Eucalyptus moluccana</i>	Grey Box	25 x 8	100L	As Shown	34.75
Er	<i>Elaeocarpus reticulatus</i>	Blueberry Ash	9 x 3	100L	As Shown	10.25
Et	<i>Eucalyptus tereticornis</i>	Forest Red Gum	35 x 10	100L	As Shown	34.75
Eu	<i>Elaeocarpus eumundi</i>	Quandong	7 x 2	100L	As Shown	10.25
Fu	<i>Fraxinus 'Urbanite'</i>	Urbanite Ash	11 x 8	100L	As Shown	22.7
Lc	<i>Lophostemon confertus</i>	Queensland Brush Box	14 x 9	100L	As Shown	22.7
Li	<i>Lagerstroemia indica</i>	Crepe Myrtle	8 x 4	100L	As Shown	10.25
Md	<i>Melaleuca decora</i>	White Feather Honey Myrtle	12 x 5	100L	As Shown	14.7
Ms	<i>Melaleuca styphelioides</i>	Prickly Leaved Paperbark	8 x 6	100L	As Shown	10.25
TL	<i>Tristaniaopsis laurina 'Luscious®'</i>	Watergum	8 x 6	100L	As Shown	10.25
Wfl	<i>Waterhousea floribunda</i>	Weeping Lily Pilly	10 x 6	100L	As Shown	14.7
SHRUBS & ACCENTS						
An	<i>Acmena smithii</i> var. minor	Lilly Pilly	2 x 1.2	200mm	As Shown	
AsM	<i>Atriplex nummularia</i>	Old man saltbush	2 x 2	200mm	As Shown	
Bo	<i>Breynia oblongifolia</i>	Coffee Bush	3 x 3	200mm	As Shown	
Bs	<i>Bursaria spinosa</i>	Blackthorn	3 x 2	200mm	As Shown	
Bv	<i>Baeckea virgata</i>	Tall Backea	3 x 2	200mm	As Shown	
Cal	<i>Correa alba</i>	White correa	1.5 x 1	200mm	As Shown	
Cci	<i>Callistemon citrinus</i>	Bottlebrush	3 x 3	200mm	As Shown	
CLJ	<i>Callistemon 'Little John'</i>	Dwarf Bottle Brush	1.5 x 1	200mm	As Shown	
De	<i>Doryanthes excelsa</i>	Gymea Lily	1.8 x 1.5	200mm	As Shown	
Du	<i>Daviesia ulicifolia</i>	Gorse Bitter Pea	3 x 2.5	200mm	As Shown	
Dv	<i>Dodonaea viscosa</i>	Hop Bush	1 x 1	200mm	As Shown	
Em	<i>Eremophila maculata</i>	Emu bush	.5 x 1.2	200mm	As Shown	
Gj	<i>Grevillea juniperina</i>	Juniper leaf grevillea	1.5 x 1	200mm	As Shown	
Hsa	<i>Hakea salicifolia</i>	Willow-leaved Hakea	5 x 4	200mm	As Shown	
MCT	<i>Melaleuca linariifolia 'Claret Tops'</i>	Honey Myrtle	1 x 1	200mm	As Shown	
PP	<i>Phormium tenax 'Purpureum'</i>	Bronze Flax	1.5 x 1	200mm	As Shown	
Wf	<i>Westringia fruticosa</i>	Coastal Roosemary	1 x 1	150mm	As Shown	
GRASSES AND GROUNDCOVERS						
Ba	<i>Brunoniella australis</i>	Blue Trumpets	0.3x	150mm	5/m ²	
Bd	<i>Bothriochloa decipiens</i> car. <i>Decipier</i>	Pitted Blue Grass	1	150mm	5/m ²	
Ca	<i>Carex appressa</i>	Tall Sedge	0.9 x 1	150mm	5/m ²	
Cas	<i>Centella asiatica</i>	Indian Pennywort	.2 x 1	150mm	5/m ²	
Ct	<i>Chloris truncata</i>	Windmill Grass	.5 x .3	150mm	5/m ²	
Dc	<i>Dianella caerulea</i>	Flax Lily	0.8x 0.5	150mm	5/m ²	
Dr	<i>Dichondra repens</i>	Kidney Weed	.1 x 1	150mm	5/m ²	
Em	<i>Entolasia marginata</i>	Bordered Panic	0.8 x 0.5	150mm	5/m ²	
Eo	<i>Echinopogon ovatus</i>	Forest Hedgehog Grass	1.2	150mm	5/m ²	
Gt	<i>Gazania tomentosa</i>	Silver Gazania	.15 x 1	150mm	5/m ²	
Hs	<i>Hibbertia scandens</i>	Climbing Guinea Flower	climbing	150mm	5/m ²	
Ic	<i>Imperata cylindrica</i>	Blady Grass	.75 x .3	150mm	5/m ²	
Ju	<i>Juncus usitatus</i>	Common Grass	.6 x 1	150mm	5/m ²	
LJR	<i>Liriope 'Just Right'</i>	Liriope	.4 x .4	150mm	5/m ²	
LI	<i>Lomandra longifolia</i>	Mat Rush	1 x 1	150mm	5/m ²	
MP	<i>Myoporum parvifolium</i>	Creeping Boobialla	.3 x 2	150mm	5/m ²	
Ms	<i>Microlaena stipoides</i>	Weeping Grass	0.7 x 0.3	150mm	5/m ²	
Ta	<i>Themeda australis</i>	Kangaroo Grass	1 x .5	150mm	5/m ²	
Vh	<i>Viola hederacea</i>	Native Violet	.15 x 1	150mm	5/m ²	
Wc	<i>Wahlenbergia communis</i>	Tufted Bluebell	0.75	150mm	5/m ²	

	Botanic Name	Common Name	Mature Size (HxW)	Pot Size	Density	Qty	VMP	Sydney Water Guidelines
Riparian Edge Planting								
Canopy Trees - Riparian Edge Planting								
Af	<i>Angophora floribunda</i>	Rough-barked Apple	20 x 6	75L	As Shown			
Ea	<i>Eucalyptus amplifolia</i>	Cabbage Gum	30 x 8	75L	As Shown			
Em	<i>Eucalyptus moluccana</i>	Coastal Grey Box	20 x 6	75L	As Shown			
Et	<i>Eucalyptus tereticornis</i>	Forest Red Gum	30 x 8	75L	As Shown			
Subcanopy Trees - Riparian Edge Planting								
Cg	<i>Casuarina glauca</i>	Swamp Oak	15 x 5	75L	As Shown			
Ap	<i>Acacia parramattensis</i>	Parramatta Wattle	10 x 3	75L	As Shown			
Md	<i>Melaleuca decora</i>	White-feather Honeymyrtle	10 x 5	75L	As Shown			
Ms	<i>Melaleuca styphelioides</i>	Prickly-leaved Tea Tree	10 x 3	75L	As Shown			
Tall Shrubs - Riparian Edge Planting								
As	<i>Acmena smithii</i>	Lilly Pilly	4 x 2	300mm	1/50m2			
Bs	<i>Bursaria spinosa</i>	Blackthorn	3 x 3	300mm	1/50m2			
Shrubs - Riparian Edge Planting								
Od	<i>Ozothamnus diosmifolius</i>	Sago Bush	2 x 1	300mm	1/50m2			
Ps	<i>Polyscias sambucifolia</i>	Elderberry Panax	3 x 2	300mm	1/50m2			
Grasses & Forbs - Riparian Edge Planting								
Ba	<i>Brunoniella australis</i>	Blue Trumpets	0.2 x 1	Tube	4/m2			
Ca	<i>Centella asiatica</i>	Indian Pennywort	0.2 x 0.5	Tube	4/m2			
Cc	<i>Commelina cyanea</i>	Scurvy Weed	0.3 x spreading	Tube	4/m2			
Ct	<i>Chloris truncata</i>	Windmill Grass	0.4 x 0.4	Tube	4/m2			
Dr	<i>Dichondra repens</i>	Kidney Weed	0.15 x spreading	Tube	4/m2			
Eh	<i>Einadia hastata</i>	Berry Saltbush	0.2 x 0.5	Tube	4/m2			
Em	<i>Entolasia marginata</i>	Bordered Panic	0.3 x 0.3	Tube	4/m2			
Ic	<i>Imperata cylindrica</i>	Blady Grass	0.4 x spreading	Tube	4/m2			
Ju	<i>Juncus usitatus</i>	Common Rush	1 x 0.5	Tube	4/m2			
Mis	<i>Microlaena stipoides</i>	Weeping Grass	0.7 x 0.7	Tube	4/m2			
Oa	<i>Oplismenus aemulus</i>	Basket Grass	0.3 x 0.3	Tube	4/m2			
Sp	<i>Solanum prinophyllum</i>	Forest Nightshade	0.4 x spreading	Tube	4/m2			
Vh	<i>Viola hederacea</i>	Native Violet	0.15 x spreading	Tube	4/m2			
Wg	<i>Wahlenbergia gracillis</i>	Sprawling Bluebell	0.2 x spreading	Tube	4/m2			
Grasses & Forbs - Upper Bank Ephemeral Planting								
Ba	<i>Brunoniella australis</i>	Blue Trumpets	0.2 x 1	Tube	4/m2			
Ca	<i>Centella asiatica</i>	Indian Pennywort	0.2 x 0.5	Tube	4/m2			
Cc	<i>Commelina cyanea</i>	Scurvy Weed	0.3 x spreading	Tube	4/m2			
Ct	<i>Chloris truncata</i>	Windmill Grass	0.4 x 0.4	Tube	4/m2			
Dr	<i>Dichondra repens</i>	Kidney Weed	0.15 x spreading	Tube	4/m2			
Eh	<i>Einadia hastata</i>	Berry Saltbush	0.2 x 0.5	Tube	4/m2			
Em	<i>Entolasia marginata</i>	Bordered Panic	0.3 x 0.3	Tube	4/m2			
Ic	<i>Imperata cylindrica</i>	Blady Grass	0.4 x spreading	Tube	4/m2			
Ju	<i>Juncus usitatus</i>	Common Rush	1 x 0.5	Tube	4/m2			
Mis	<i>Microlaena stipoides</i>	Weeping Grass	0.7 x 0.7	Tube	4/m2			
Oa	<i>Oplismenus aemulus</i>	Basket Grass	0.3 x 0.3	Tube	4/m2			
Sp	<i>Solanum prinophyllum</i>	Forest Nightshade	0.4 x spreading	Tube	4/m2			
Vh	<i>Viola hederacea</i>	Native Violet	0.15 x spreading	Tube	4/m2			
Wg	<i>Wahlenbergia gracillis</i>	Sprawling Bluebell	0.2 x spreading	Tube	4/m2			
Sedges, Rushes & Aquatic Plants - Lower Bank Ephemeral Planting								
Ca	<i>Carex appressa</i>	Tall Sedge	0.5 x 0.5	Tube	4/m2			
Cc	<i>Commelina cyanea</i>	Scurvy Weed	0.3 x spreading	Tube	4/m2			
Dr	<i>Dichondra repens</i>	Kidney Weed	0.15 x spreading	Tube	4/m2			
Ju	<i>Juncus usitatus</i>	Common Rush	1 x 0.5	Tube	4/m2			
Pp	<i>Pratia purpurascens</i>	White Root	0.2 x spreading	Tube	4/m2			
Sp	<i>Solanum prinophyllum</i>	Forest Nightshade	0.4 x spreading	Tube	4/m2			
Vh	<i>Viola hederacea</i>	Native Violet	0.15 x spreading	Tube	4/m2			
Bio-retention Basin								
Ca	<i>Carex appressa</i>	Tall Sedge	0.5 x 0.5	Tube	8/m2			
Cc	<i>Commelina cyanea</i>	Scurvy Weed	0.3 x spreading	Tube	8/m2			
Dr	<i>Dichondra repens</i>	Kidney Weed	0.15 x spreading	Tube	8/m2			
Ju	<i>Juncus usitatus</i>	Common Rush	1 x 0.5	Tube	8/m2			
Pp	<i>Pratia purpurascens</i>	White Root	0.2 x spreading	Tube	8/m2			
Sp	<i>Solanum prinophyllum</i>	Forest Nightshade	0.4 x spreading	Tube	8/m2			
Vh	<i>Viola hederacea</i>	Native Violet	0.15 x spreading	Tube	8/m2			

NOTE: FOR FURTHER PLANTING
DETAILS REFER TO LANDSCAPE
DESIGN REPORT

NOTE: Planting Details added to
incorporate Sydney Water
Technical Guideline and Penrith
Council WSUD Guideline
planting specifications.

NOT FOR CONSTRUCTION

© 2021 Site Image (NSW) Pty Ltd ABN 44 801 262 380 as agent for Site Image NSW Partnership. All rights reserved. This drawing is copyright and shall not be reproduced or copied in any form or by any means (graphic, electronic or mechanical including photocopy) without the written permission of Site Image (NSW) Pty Ltd Any license, expressed or implied, to use this document for any purpose what so ever is restricted to the terms of the written agreement between Site Image (NSW) Pty Ltd and the instructing party.

The contractor shall check and verify all work on site (including work by others) before commencing the landscape installation. Any discrepancies are to be reported to the Project Manager or Landscape Architect prior to commencing work. Do not scale this drawing. Any required dimensions not shown shall be referred to the Landscape Architect for confirmation.

E	For Comment
D	For Development Application
C	For Development Application
B	For Coordination
A	Development Application
Issue	Revision Description

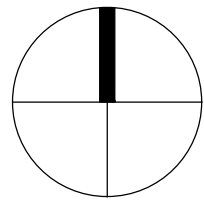
CS	NM	06.02.2024
LH	NM	28.07.2023
CK	NM	15.12.2022
LW	NM	29.11.2022
LW	NM	25.08.2022
Draw	Check	Date

Legend



Client
The GPT Group

Project
West Yiribana Logistics Estate
771-797 Mamre Road,
Kemps Creek NSW



Drawing Name
Plant Schedule

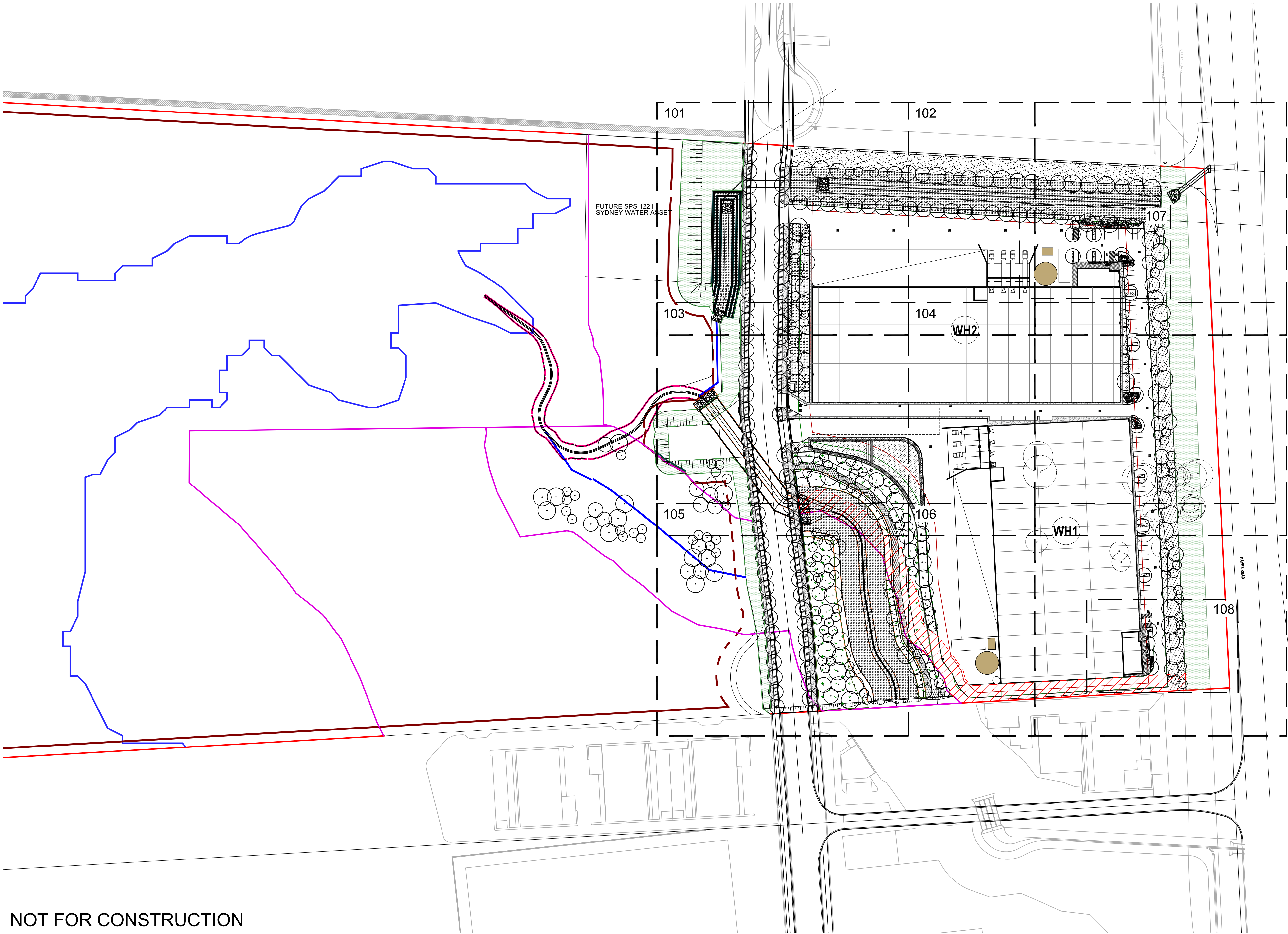
Development Application

Scale
Job Number
SS22-5024

Drawing Number

Issue

002 E



NOT FOR CONSTRUCTION

© 2021 Site Image (NSW) Pty Ltd ABN 44 801 262 380 as agent for Site Image NSW Partnership. All rights reserved. This drawing is copyright and shall not be reproduced or copied in any form or by any means (graphic, electronic or mechanical including photocopy) without the written permission of Site Image (NSW) Pty Ltd. Any license, expressed or implied, to use this document for any purpose what so ever is restricted to the terms of the written agreement between Site Image (NSW) Pty Ltd and the instructing party.

The contractor shall check and verify all work on site (including work by others) before commencing the landscape installation. Any discrepancies are to be reported to the Project Manager or Landscape Architect prior to commencing work. Do not scale this drawing. Any required dimensions not shown shall be referred to the Landscape Architect for confirmation.

E	For Comment
D	Development Application
C	For Development Application
B	For Coordination
A	Development Application
Issue	Revision Description

CS	NM	06.02.2024
LH	NM	28.07.2023
CK	NM	15.12.2022
LW	NM	29.11.2022
LW	NM	25.08.2022
Drawn	Check	Date

Legend	
	Site Boundary
	Proposed Trees
	Proposed Shrubs and Accents
	Groundcovers

	Concrete Path
	Meadow Planting
	Paving Type 1
	Defendable Space to Vegetation in RE1 Corridor

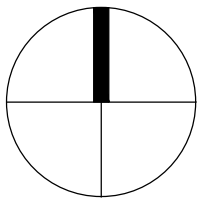
	Matrix Planting Type 1
Refer to Detail	
	Matrix Planting Type 2
Refer to Detail	
	Matrix Planting Type 3
Refer to Detail	
	Matrix Planting Type 4
Refer to Detail	

	Sydney Water Drainage Planting
Refer to Detail & Sydney Water Technical Guidelines	
	Detention Basin Matrix Planting
Refer to Detail & Council's WSUD Guidelines	

SITE IMAGE
Landscape Architects
Level 1, 3-5 Baptist Street
Redfern NSW 2016
Australia
Tel: (61 2) 8332 5600
Fax: (61 2) 9698 2877
www.siteimage.com.au

Client
The GPT Group

Project
West Yiribana Logistics Estate
771-797 Mamre Road,
Kemps Creek NSW

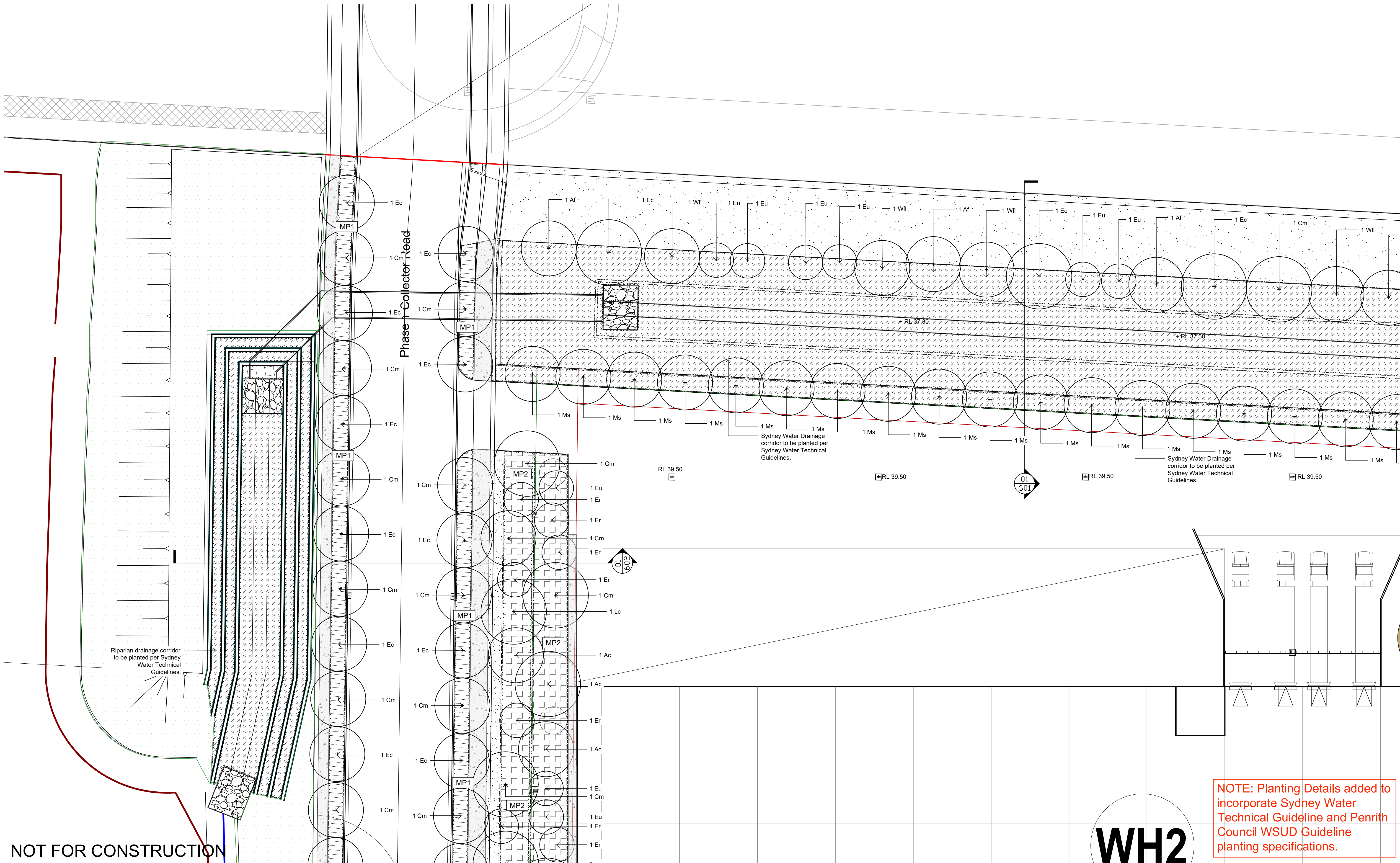


Drawing Name
Landscape Master Plan

Development Application
Scale 1:1000 @ A1
Job Number
SS22-5024

0 5 10 25 50m
Drawing Number
Issue

100 E



NOT FOR CONSTRUCTION

NOTE: Planting Details added to incorporate Sydney Water Technical Guideline and Penrith Council WSUD Guideline planting specifications.

© 2021 Site Image (NSW) Pty Ltd ABN 44 801 262 380 as agent for Site Image NSW Partnership. All rights reserved. This drawing is copyright and shall not be reproduced or copied in any form or by any means (graphic, electronic or mechanical including photocopy) without the written permission of Site Image (NSW) Pty Ltd. Any license, expressed or implied, to use this document for any purpose what so ever is restricted to the terms of the written agreement between Site Image (NSW) Pty Ltd and the instructing party.

The contractor shall check and verify all work on site (including work by others) before commencing the landscape installation. Any discrepancies are to be reported to the Project Manager or Landscape Architect prior to commencing work. Do not scale this drawing. Any required dimensions not shown shall be referred to the Landscape Architect for confirmation.

Issue	Revision Description
E	For Comment
D	Development Application
C	For Development Application
B	For Coordination
A	Development Application

Drawn	Check	Date
CS	NM	06.02.2024
LH	NM	28.07.2023
CK	NM	15.12.2022
LW	NM	29.11.2022
LW	NM	25.08.2022

Legend	
Site Boundary	
Proposed Trees	
Proposed Shrubs and Accents	
Groundcovers	

Concrete Path	
Meadow Planting	
Paving Type 1	
Defendable Space to Vegetation in RE1 Corridor	

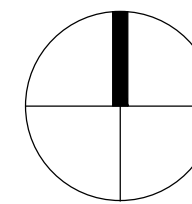
Matrix Planting Type 1	Refer to Detail
Matrix Planting Type 2	Refer to Detail
Matrix Planting Type 3	Refer to Detail
Matrix Planting Type 4	Refer to Detail

Sydney Water Drainage Planting	Refer to Detail & Sydney Water Technical Guidelines
Detention Basin Matrix Planting	Refer to Detail & Council's WSUD Guidelines

SITE IMAGE
Landscape Architects
Level 1, 3-5 Baptist Street
Redfern NSW 2016
Australia
Tel: (61 2) 8332 5600
Fax: (61 2) 9698 2877
www.siteimage.com.au

Client
The GPT Group

Project
West Yiribana Logistics Estate
771-797 Mamre Road,
Kemps Creek NSW



Drawing Name
Landscape Plan

Scale 1:250 @ A1
Job Number
SS22-5024

Drawing Number
101

Issue
E

+ RL 40.00

at 500 1 Collector Road

© 2021 Site Image (NSW) Pty Ltd ABN 44 801 262 380 as agent for Site Image NSW Partnership. All rights reserved. This drawing is copyright and shall not be reproduced or copied in any form or by any means (graphic, electronic or mechanical including photocopy) without the written permission of Site Image (NSW) Pty Ltd Any license, expressed or implied, to use this document for any purpose what so ever is restricted to the terms of the written agreement between Site Image (NSW) Pty Ltd and the instructing party.


The contractor shall check and verify all work on site (including work by others) before commencing the landscape installation. Any discrepancies are to be reported to the Project Manager or Landscape Architect prior to commencing work. Do not scale this drawing. Any required dimensions not shown shall be referred to the Landscape Architect for confirmation.

E	For Comment
D	Development Application
C	For Development Application
B	For Coordination
A	Development Application
Issue	Revision Description

CS	NM	06.02.2024
LH	NM	28.07.2023
CK	NM	15.12.2022
LW	NM	29.11.2022
LW	NM	25.08.2022
Drawn	Check	Date



Groundcovers



Defendable Space to
Vegetation in RE1 Corridor

 **Matrix Planting Type 4**
Refer to Detail

Landscape Architects
Level 1, 3-5 Baptist Street
Redfern NSW 2016
Australia
Tel: (61 2) 8332 5600
Fax: (61 2) 9698 2877
www.siteimage.com.au

Development Application

Issue

103 E

WH2

+ RL 40.00

+ RL 39.80

+ RL 39.85

+ RL 39.80

SP2

Mamre Road

WH1

Detention Basin to be planted as per Penrith Council's WSUD Guidelines.

1 Ea
1 Ms
1 TL
1 Md
1 Md
1 TL
1 Ae
1 Md
1 Cm
1 Et

REI drainage corridor to be planted per Sydney Water Technical Guidelines.

1 Emo

1 TL

1 Eu

1 Af

1 Ac

1 Eu

1 TL

1 Md

1 Wf

NOT FOR CONSTRUCTION

© 2021 Site Image (NSW) Pty Ltd ABN 44 801 262 380 as agent for Site Image NSW Partnership. All rights reserved. This drawing is copyright and shall not be reproduced or copied in any form or by any means (graphic, electronic or mechanical including photocopy) without the written permission of Site Image (NSW) Pty Ltd. Any license, expressed or implied, to use this document for any purpose what so ever is restricted to the terms of the written agreement between Site Image (NSW) Pty Ltd and the instructing party.

The contractor shall check and verify all work on site (including work by others) before commencing the landscape installation. Any discrepancies are to be reported to the Project Manager or Landscape Architect prior to commencing work. Do not scale this drawing. Any required dimensions not shown shall be referred to the Landscape Architect for confirmation.

E	For Comment
D	Development Application
C	For Development Application
B	For Coordination
A	Development Application
Issue	Revision Description

CS	NM	06.02.2024
LH	NM	28.07.2023
CK	NM	15.12.2022
LW	NM	29.11.2022
LW	NM	25.08.2022
Drawn	Check	Date

Legend

Site Boundary

Proposed Trees

Proposed Shrubs and Accents

Groundcovers

Concrete Path

Meadow Planting

Paving Type 1

Defendable Space to Vegetation in RE1 Corridor

Matrix Planting Type 1

Refer to Detail

Matrix Planting Type 2

Refer to Detail

Matrix Planting Type 3

Refer to Detail

Matrix Planting Type 4

Refer to Detail

Sydney Water Drainage Planting

Refer to Detail & Sydney Water Technical Guidelines

Detention Basin Matrix Planting

Refer to Detail & Council's WSUD Guidelines

SITE IMAGE



Landscape Architects

Level 1, 3-5 Baptist Street

Redfern NSW 2016

Australia

Tel: (61 2) 8332 5600

Fax: (61 2) 9698 2877

www.siteimage.com.au

Client

The GPT Group

Project

West Yiribana Logistics Estate

771-797 Mamre Road,

Kemps Creek NSW

Drawing Name

Landscape Detail Plan

Development Application

Scale 1:250 @ A1

Job Number

SS22-5024

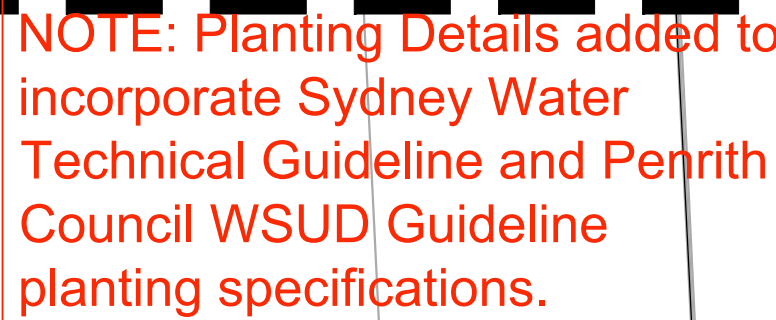
0 1 2 4 6 10m

Drawing Number

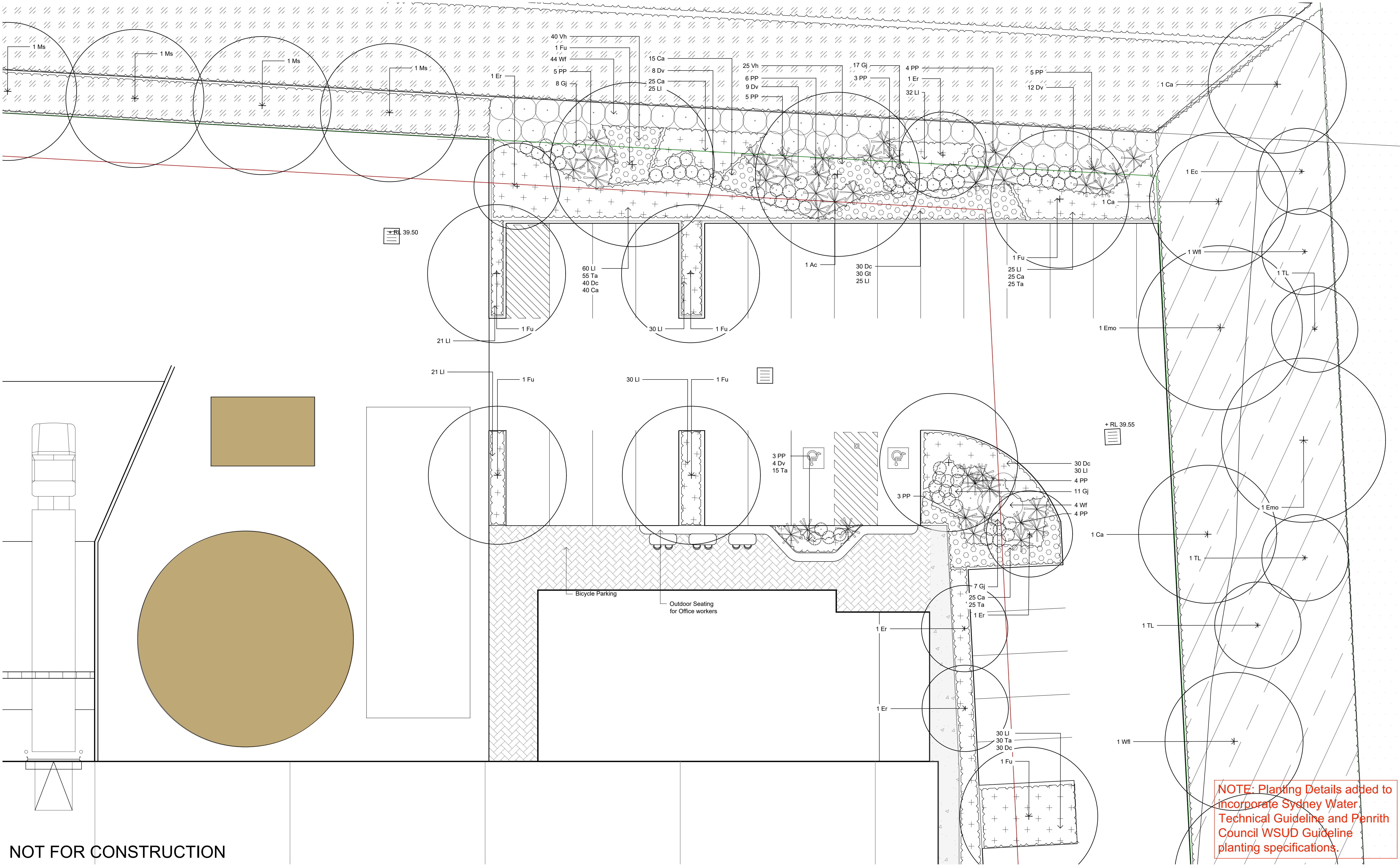
104

E

NOTE: Planting Details added to incorporate Sydney Water Technical Guideline and Penrith Council WSUD Guideline planting specifications.



A1



NOT FOR CONSTRUCTION

© 2021 Site Image (NSW) Pty Ltd ABN 44 801 262 380 as agent for Site Image NSW Partnership. All rights reserved. This drawing is copyright and shall not be reproduced or copied in any form or by any means (graphic, electronic or mechanical including photocopy) without the written permission of Site Image (NSW) Pty Ltd. Any license, expressed or implied, to use this document for any purpose what so ever is restricted to the terms of the written agreement between Site Image (NSW) Pty Ltd and the instructing party.

The contractor shall check and verify all work on site (including work by others) before commencing the landscape installation. Any discrepancies are to be reported to the Project Manager or Landscape Architect prior to commencing work. Do not scale this drawing. Any required dimensions not shown shall be referred to the Landscape Architect for confirmation.

D	For Comment
C	Development Application
B	For Coordination
A	Development Application
Issue	Revision Description

CS	NM	06.02.2024
LH	NM	28.07.2023
LW	NM	29.11.2022
LW	NM	25.08.2022
Draw	Check	Date

Legend

- Site Boundary
- Proposed Trees
- Proposed Shrubs and Accents
- Groundcovers

- Concrete Path
- Meadow Planting
- Paving Type 1
- Defendable Space to Vegetation in RE1 Corridor

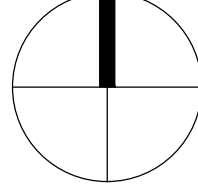
- Matrix Planting Type 1
Refer to Detail
- Matrix Planting Type 2
Refer to Detail
- Matrix Planting Type 3
Refer to Detail
- Matrix Planting Type 4
Refer to Detail

- Sydney Water Drainage Planting
Refer to Detail & Sydney Water Technical Guidelines
- Detention Basin Matrix Planting
Refer to Detail & Council's WSUD Guidelines

SITE IMAGE
Landscape Architects
Level 1, 3-5 Baptist Street
Redfern NSW 2016
Australia
Tel: (61 2) 8332 5600
Fax: (61 2) 9698 2877
www.siteimage.com.au

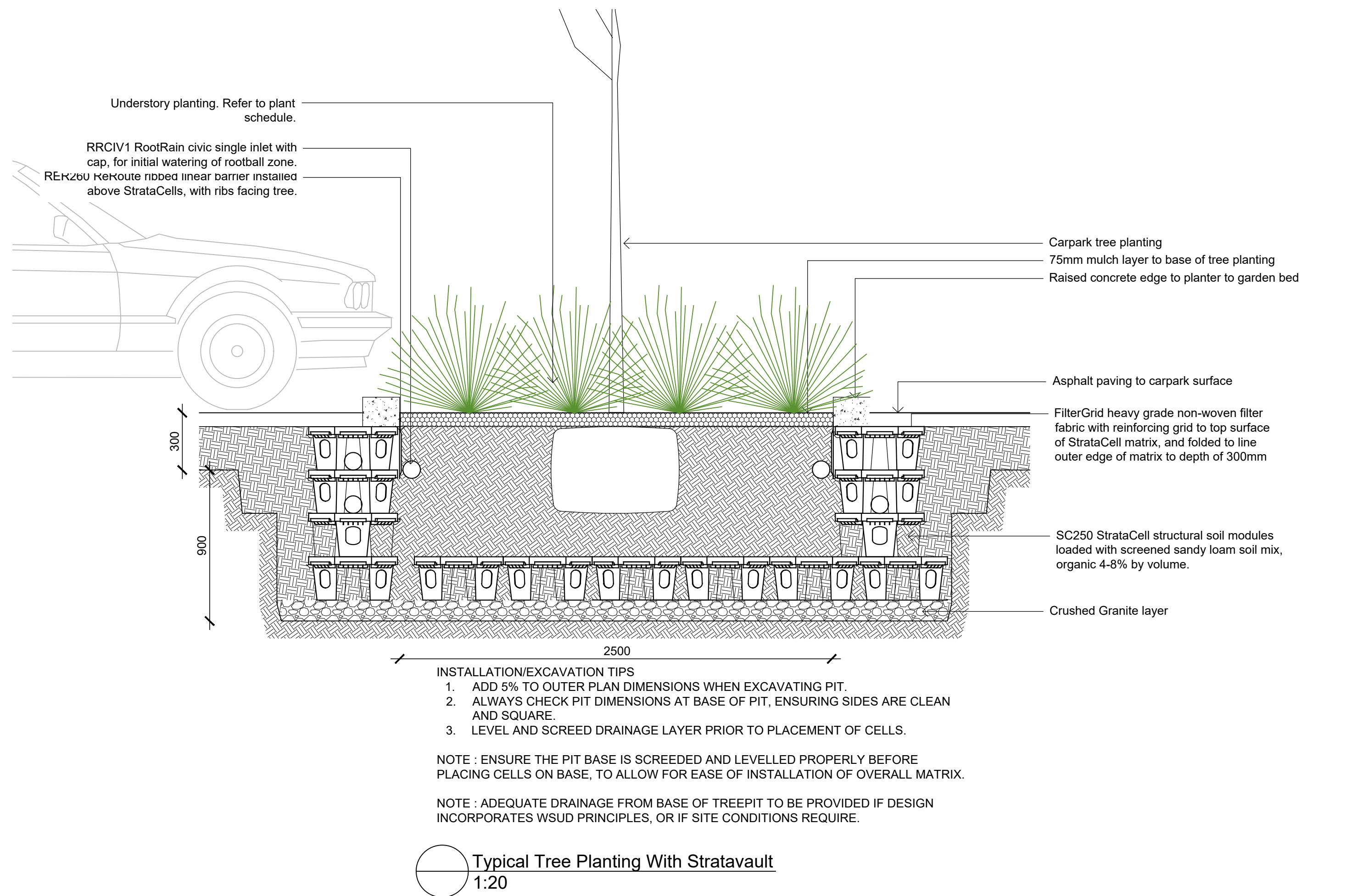
Client
The GPT Group

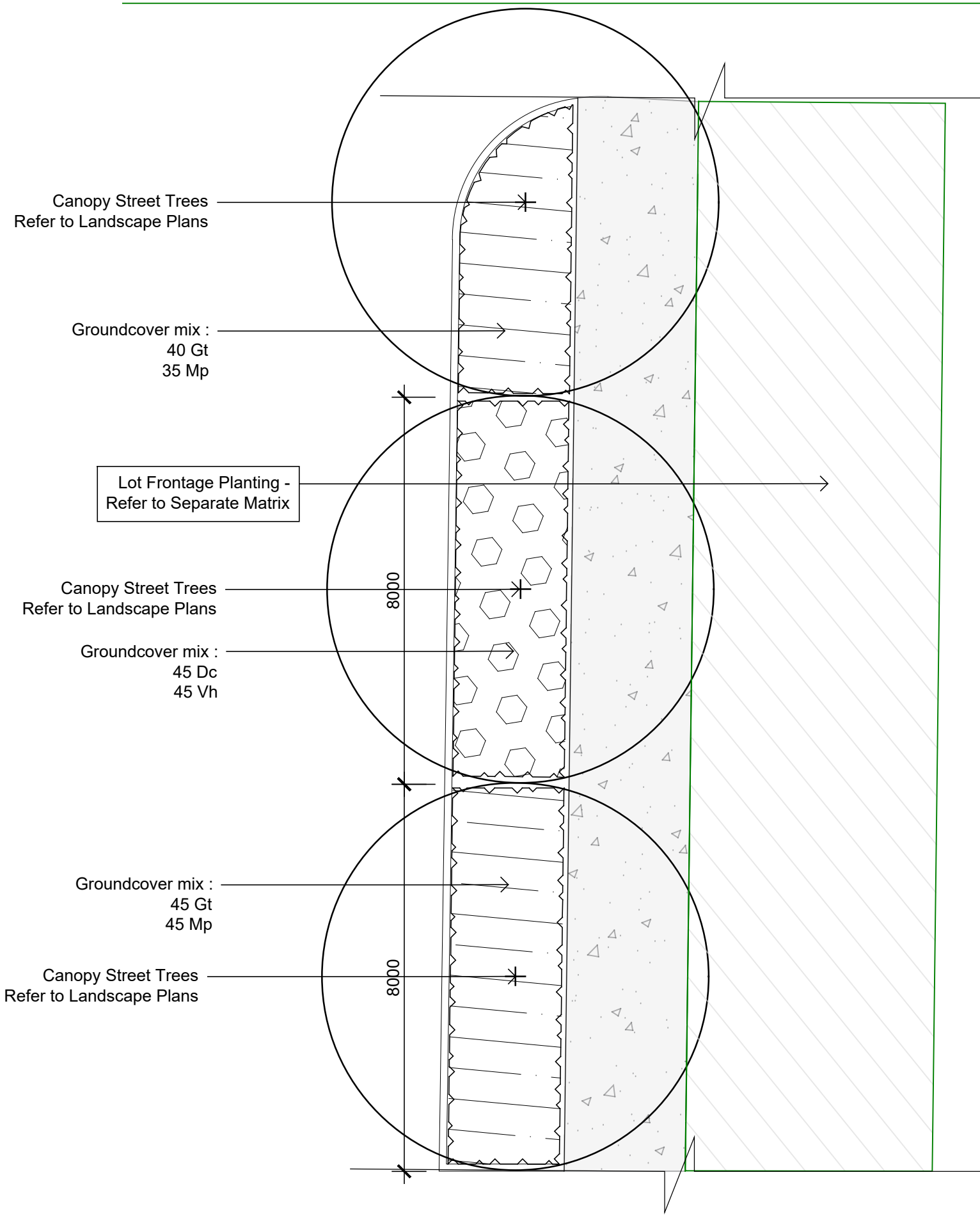
Project
West Yiribana Logistics Estate
771-797 Mamre Road,
Kemps Creek NSW



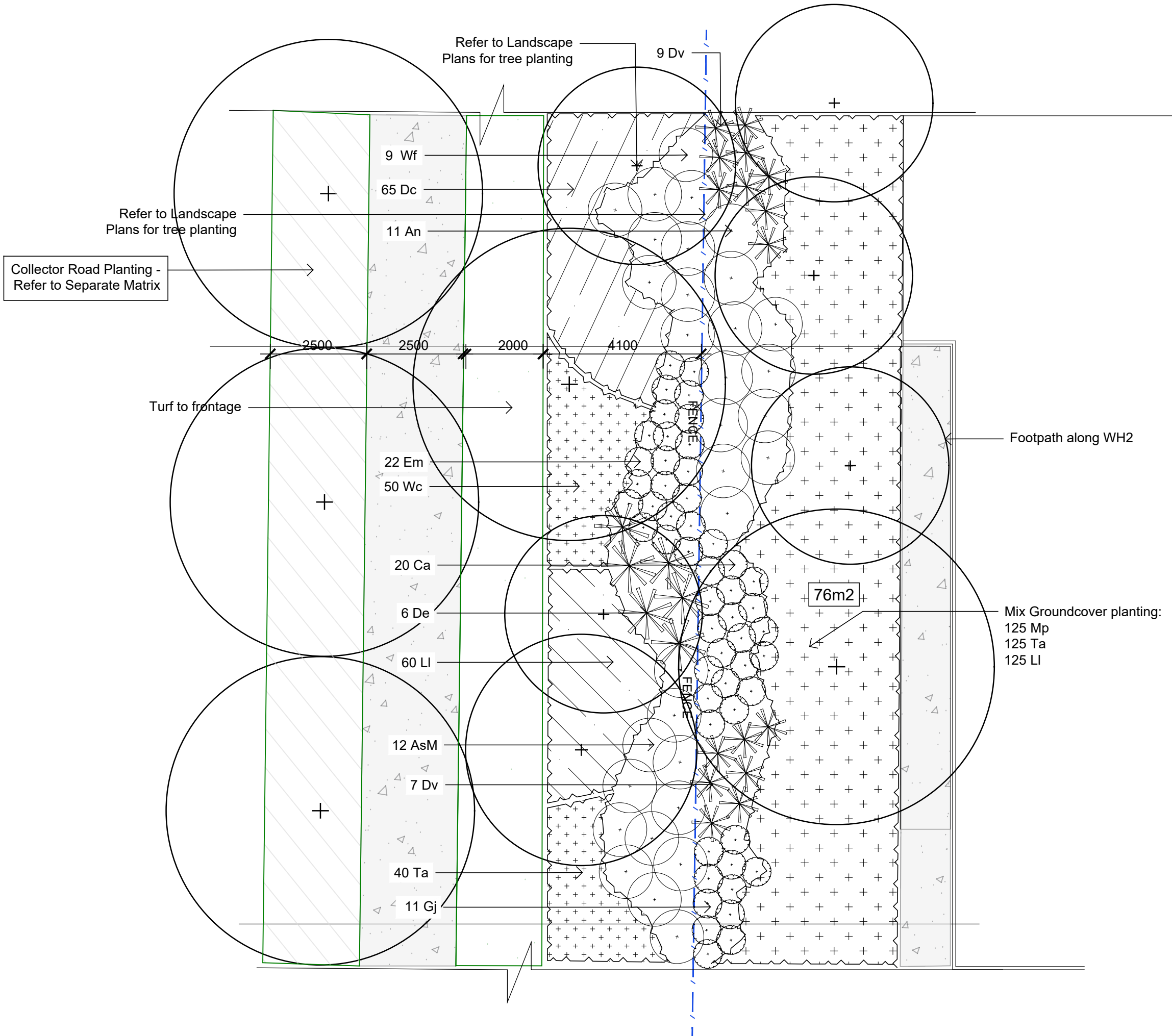
Drawing Name
Landscape Detail Plan
WH2 Breakout Space

Development Application
Scale 1:100 @ A1
Job Number
SS22-5024
Drawing Number
107
Issue
D

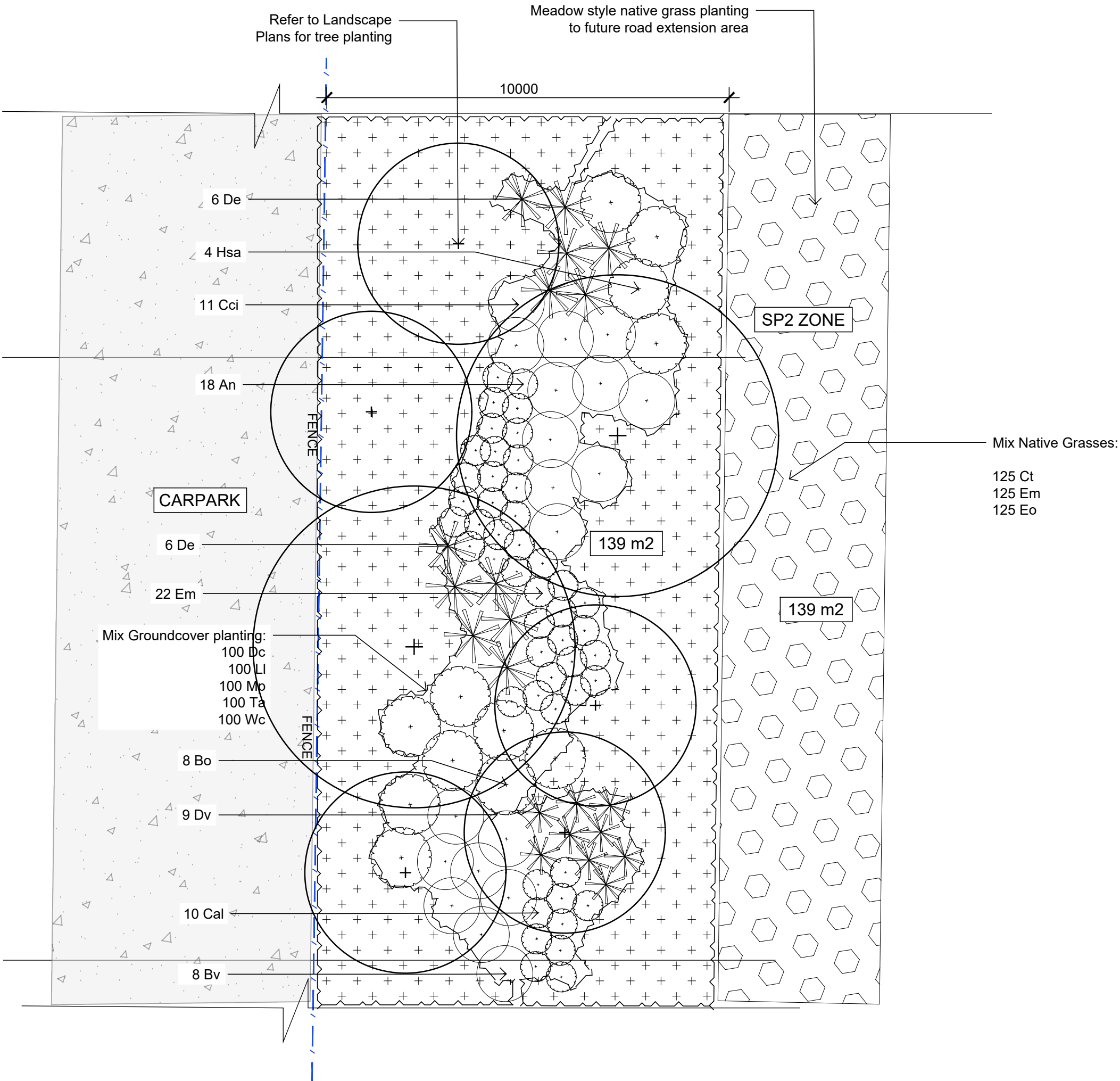




Matrix 1 - Collector Road Planting (Typical)
Scale 1:100



Matrix 2 - WH2 Frontage Planting (Typical)
Scale 1:100



Matrix 3 - Mamre Road Frontage Planting (Typical)
Scale 1:100

NOT FOR CONSTRUCTION

© 2021 Site Image (NSW) Pty Ltd ABN 44 801 262 380 as agent for Site Image NSW Partnership. All rights reserved. This drawing is copyright and shall not be reproduced or copied in any form or by any means (graphic, electronic or mechanical including photocopy) without the written permission of Site Image (NSW) Pty Ltd Any license, expressed or implied, to use this document for any purpose what so ever is restricted to the terms of the written agreement between Site Image (NSW) Pty Ltd and the instructing party.

The contractor shall check and verify all work on site (including work by others) before commencing the landscape installation. Any discrepancies are to be reported to the Project Manager or Landscape Architect prior to commencing work. Do not scale this drawing. Any required dimensions not shown shall be referred to the Landscape Architect for confirmation.

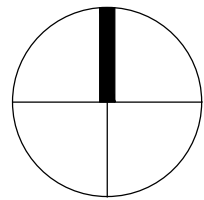
E	For Comment	CS	NM	06.02.2024
B	Development Application	LH	NM	28.07.2023
A	Development Application	CK	NM	15.12.2022
Issue	Revision Description	Drawn	Check	Date

Legend



Client
The GPT Group

Project
West Yiribana Logistics Estate
771-797 Mamre Road,
Kemps Creek NSW



Drawing Name
Matrix Planting Details

Development Application

Scale As Shown

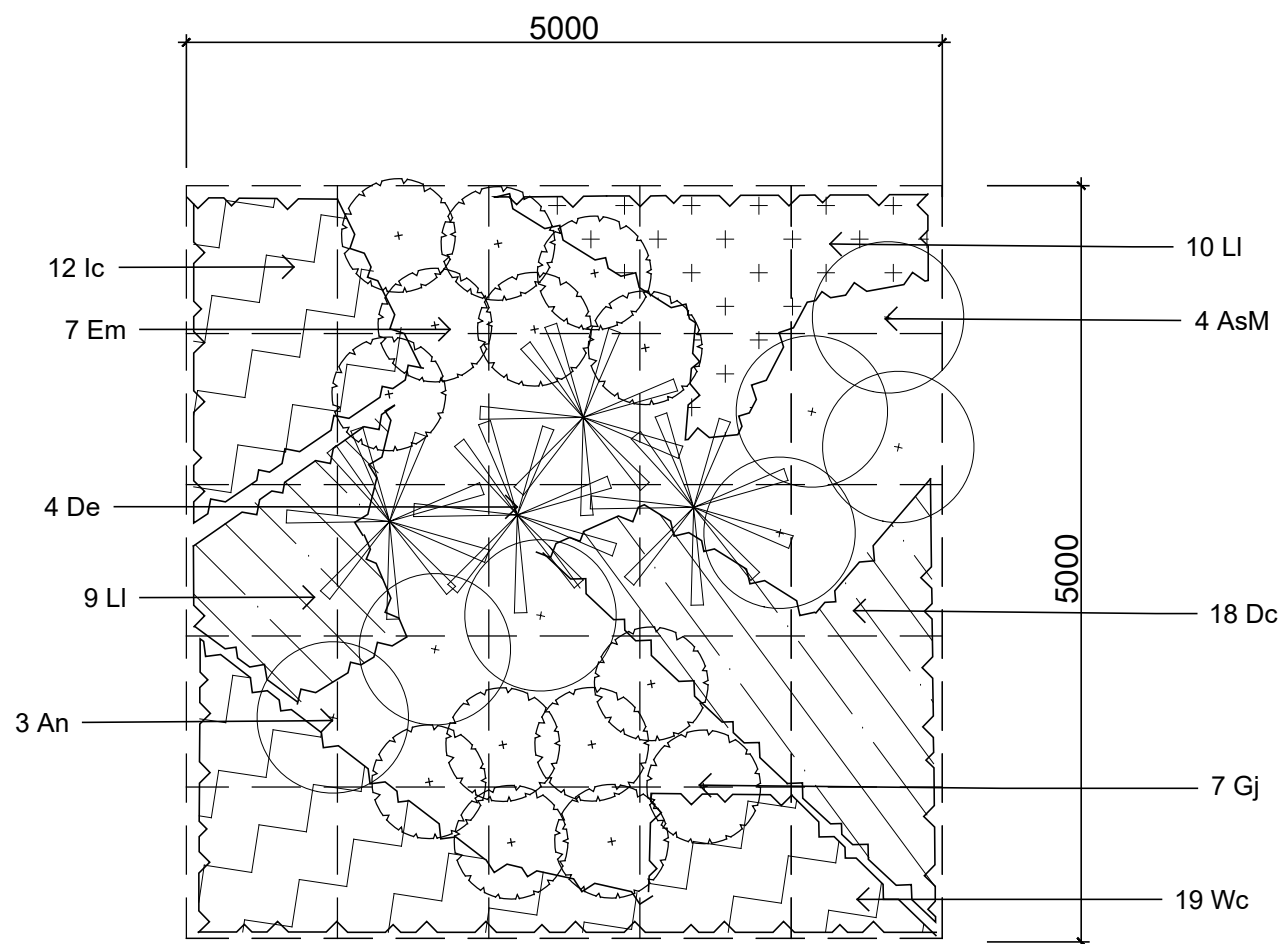
Job Number

SS22-5024

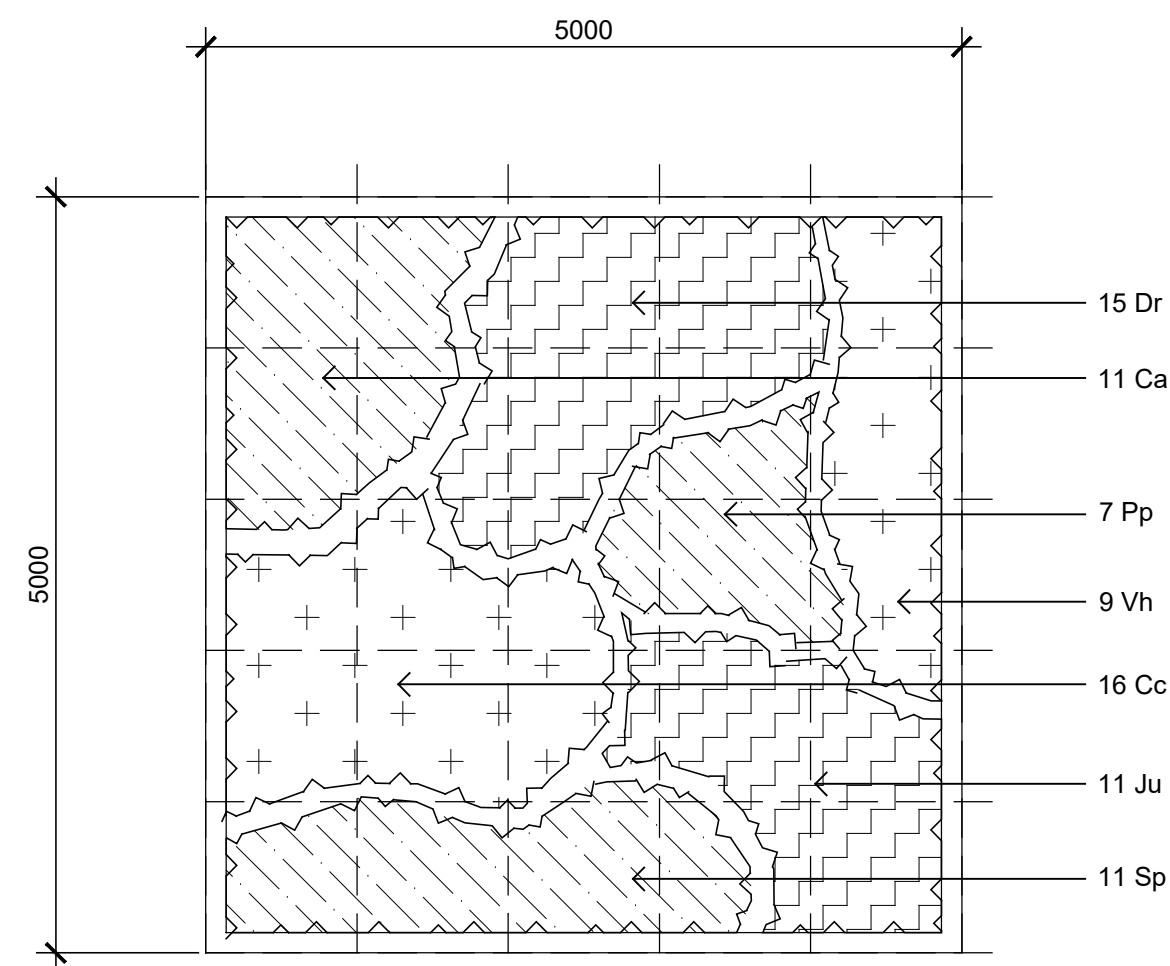
Drawing Number

Issue

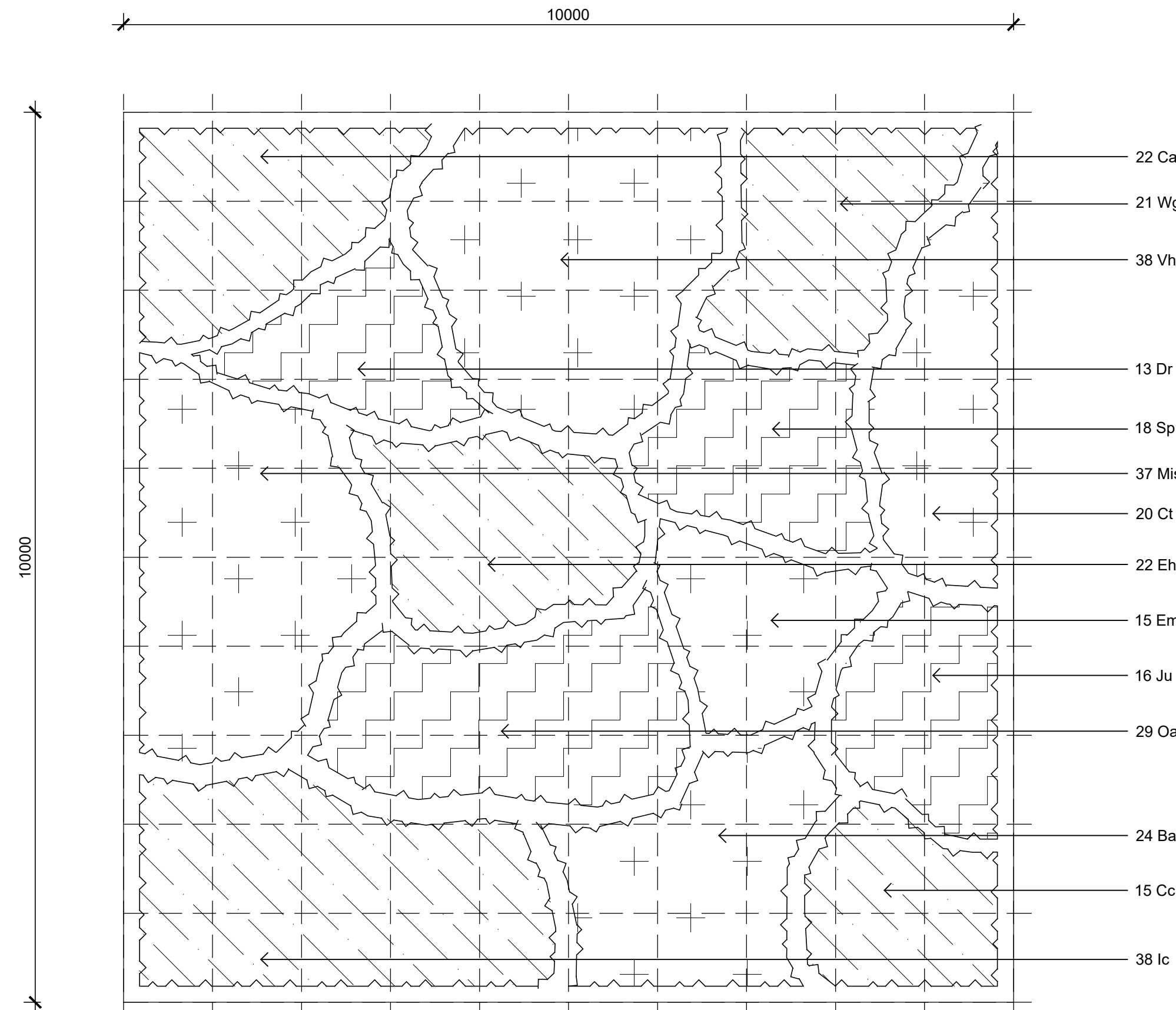
502 C



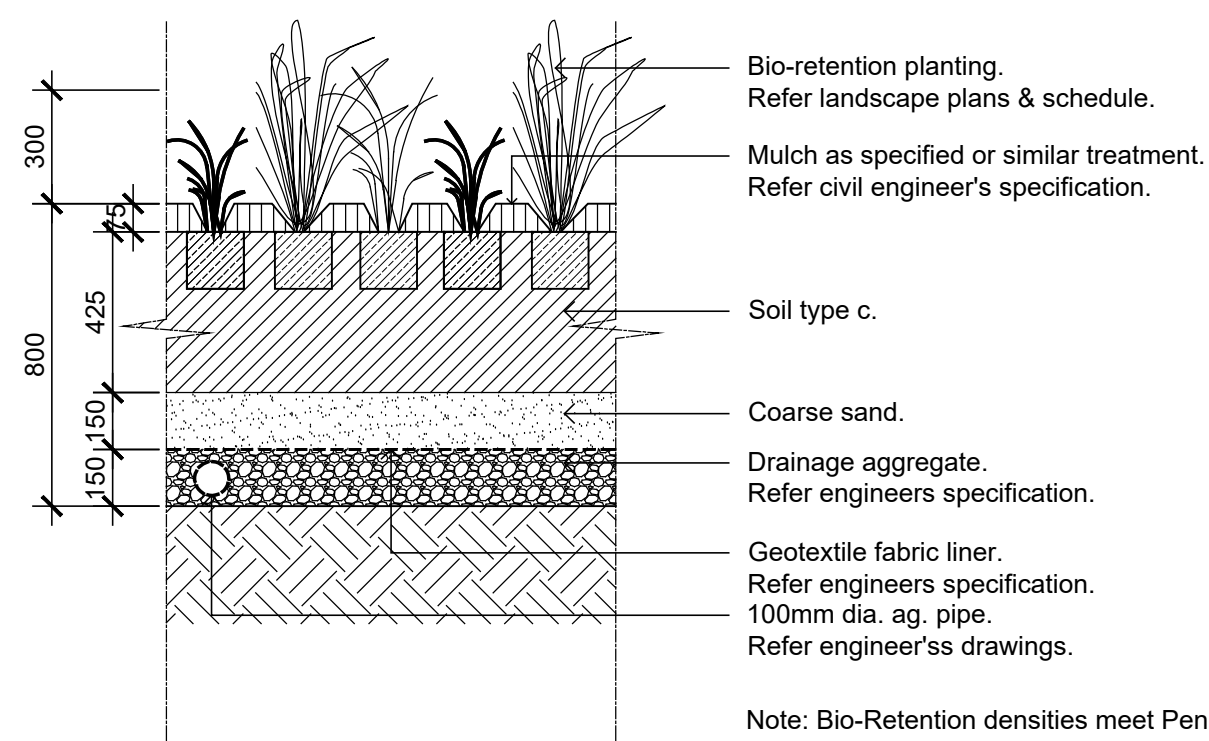
Matrix 4 - Understory Planting
Scale 1:50



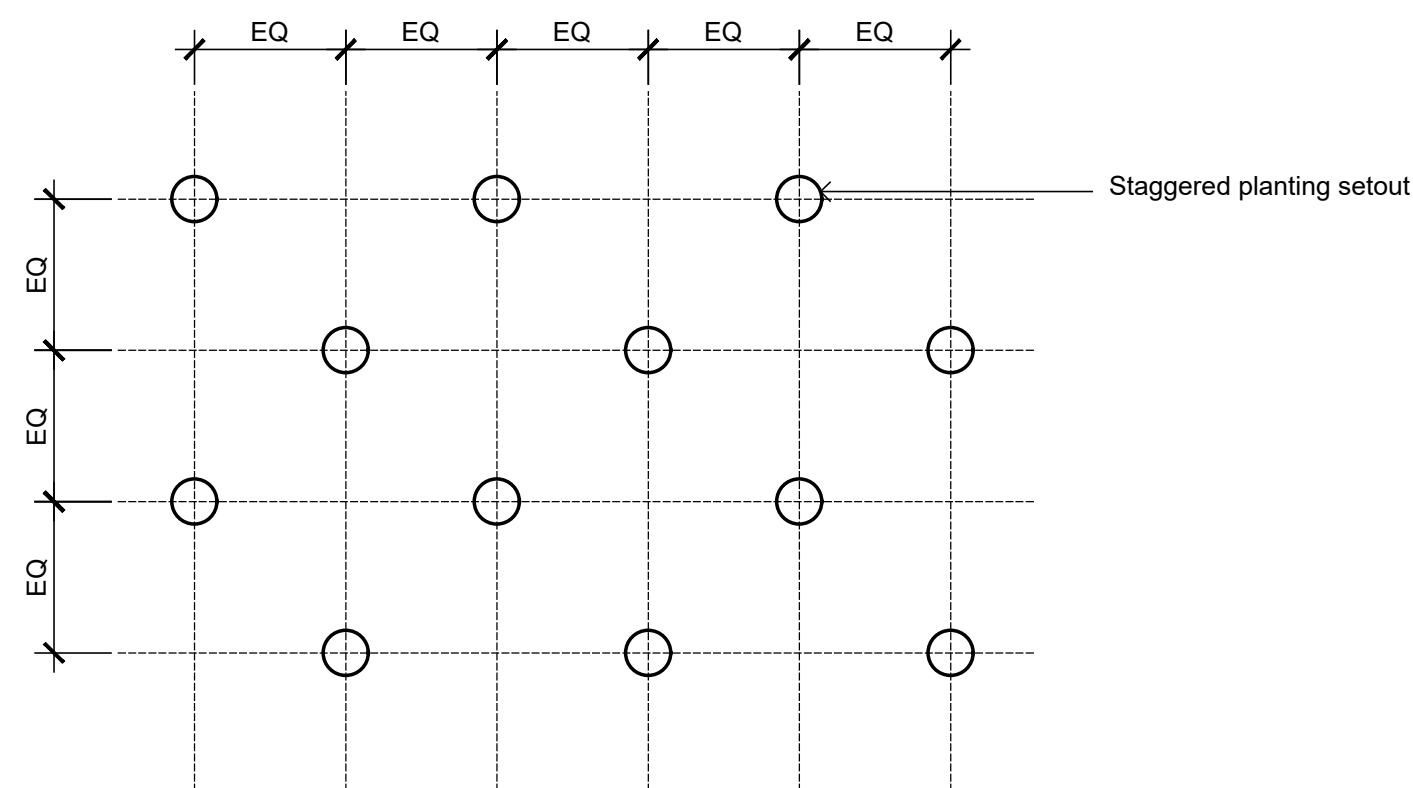
Sydney Water Drainage Planting Type 01
1:50
Sedges, Rushes & Aquatic Plants Planting Matrix
Note: Plant species selection in line with Sydney Water Guidelines.



Sydney Water Drainage Planting Type 02
1:50
Grasses & Forbs Planting Matrix
Note: Plant species selection in line with Sydney Water Guidelines.



Indicative Bio-Retention Section
1:20



Bio-Retention Matrix Planting
1:10
Note: Bio-Retention densities meet Penrith Council's WSUD Technical Guidelines equaling 8 per square meter.

NOTE: Planting Details added to incorporate Sydney Water Technical Guideline and Penrith Council WSUD Guideline planting specifications.

NOT FOR CONSTRUCTION

© 2021 Site Image (NSW) Pty Ltd ABN 44 801 262 380 as agent for Site Image NSW Partnership. All rights reserved. This drawing is copyright and shall not be reproduced or copied in any form or by any means (graphic, electronic or mechanical including photocopy) without the written permission of Site Image (NSW) Pty Ltd Any license, expressed or implied, to use this document for any purpose what so ever is restricted to the terms of the written agreement between Site Image (NSW) Pty Ltd and the instructing party.

The contractor shall check and verify all work on site (including work by others) before commencing the landscape installation. Any discrepancies are to be reported to the Project Manager or Landscape Architect prior to commencing work. Do not scale this drawing. Any required dimensions not shown shall be referred to the Landscape Architect for confirmation.

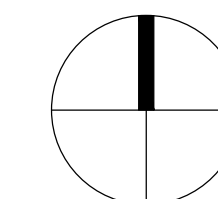
C	For Comment	CS	NM	06.02.2024
B	Development Application	LH	NM	28.07.2023
A	Development Application	CK	NM	15.12.2022
Issue	Revision Description	Drawn	Check	Date

Legend

SITE IMAGE
Landscape Architects
Level 1, 3-5 Baptist Street
Redfern NSW 2016
Australia
Tel: (61 2) 8332 5600
Fax: (61 2) 9698 2877
www.siteimage.com.au

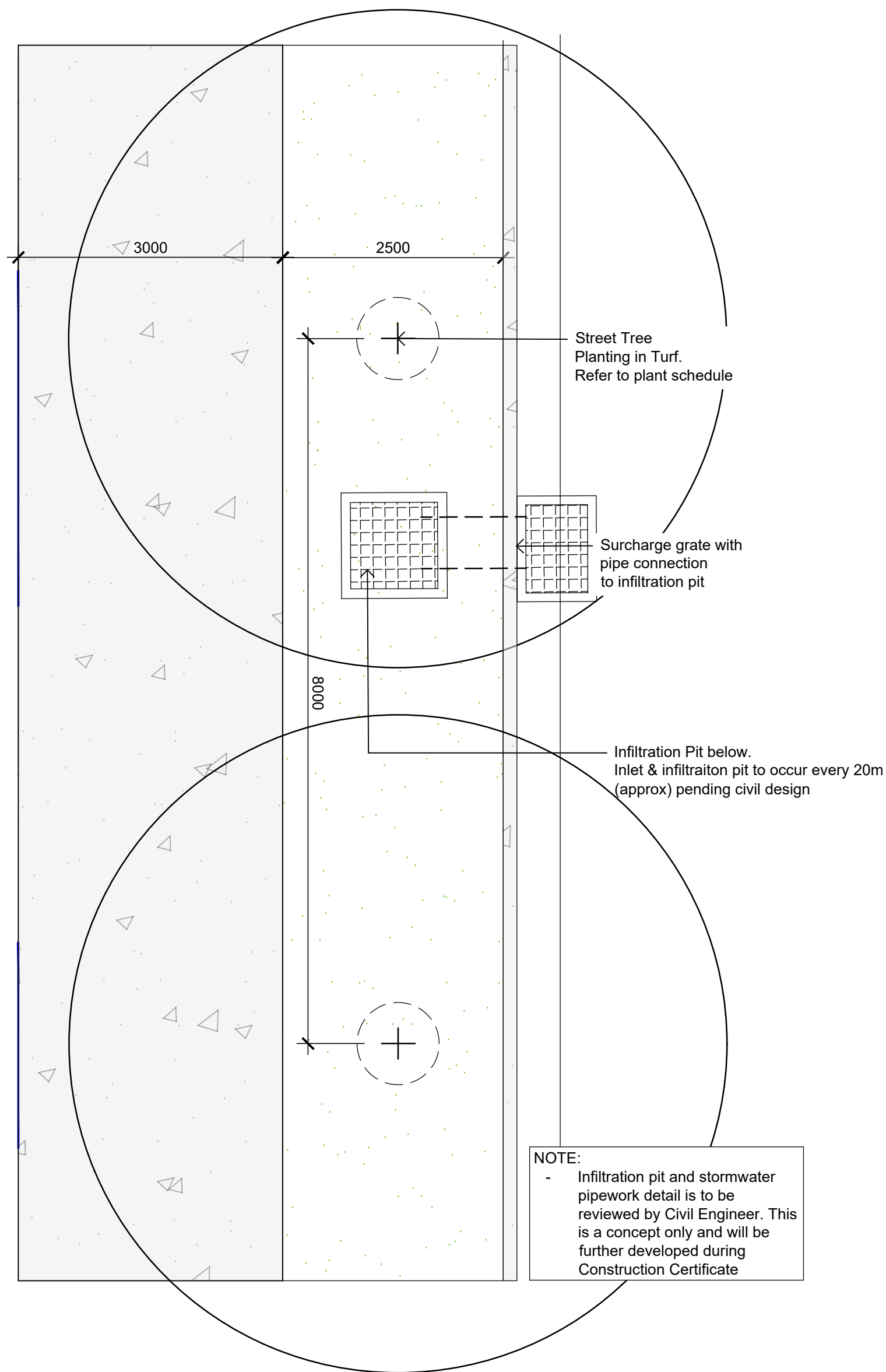
Client
The GPT Group

Project
West Yiribana Logistics Estate
771-797 Mamre Road,
Kemps Creek NSW

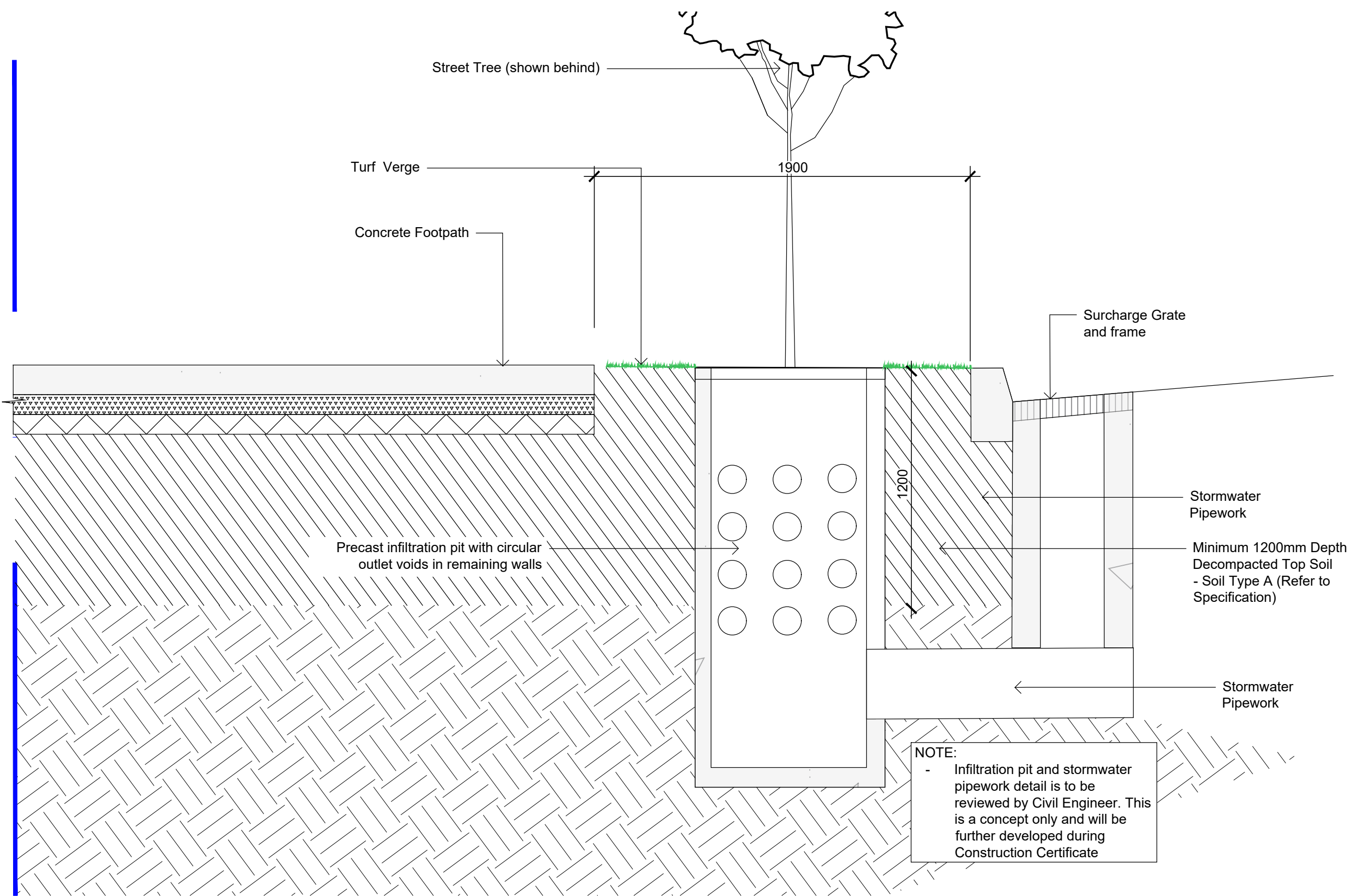


Drawing Name
Matrix Planting Details

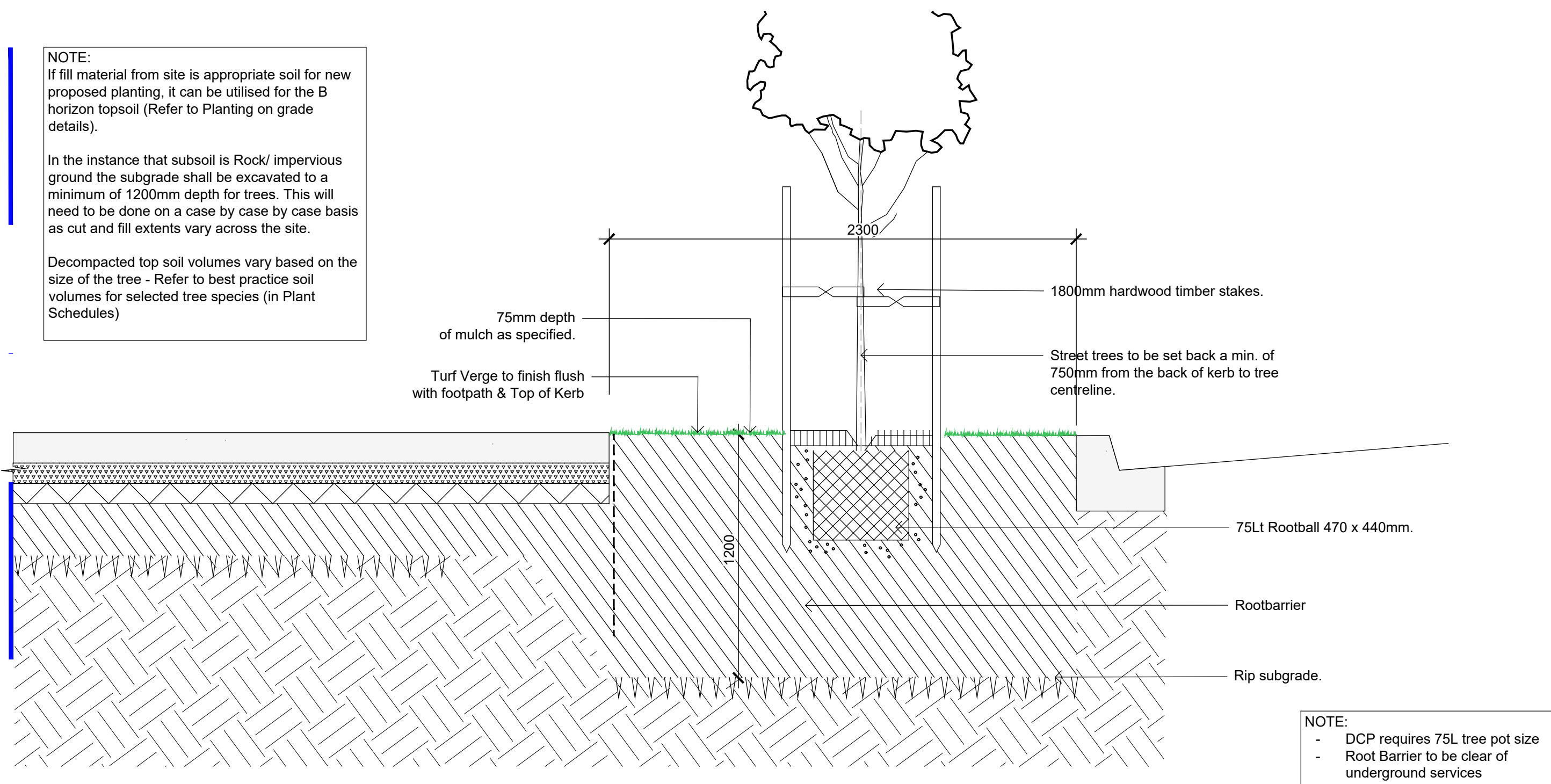
Development Application
Scale As Shown
Job Number
SS22-5024
Drawing Number
503
Issue
C



Passive Irrigation to Street Trees - Typical Plan
1:50



Passive Irrigation to Street Trees - Typical Detail



Street Tree Planting - Typical Detail
1:20

NOT FOR CONSTRUCTION

© 2021 Site Image (NSW) Pty Ltd ABN 44 801 262 380 as agent for Site Image NSW Partnership. All rights reserved. This drawing is copyright and shall not be reproduced or copied in any form or by any means (graphic, electronic or mechanical including photocopy) without the written permission of Site Image (NSW) Pty Ltd Any license, expressed or implied, to use this document for any purpose what so ever is restricted to the terms of the written agreement between Site Image (NSW) Pty Ltd and the instructing party.

The contractor shall check and verify all work on site (including work by others) before commencing the landscape installation. Any discrepancies are to be reported to the Project Manager or Landscape Architect prior to commencing work. Do not scale this drawing. Any required dimensions not shown shall be referred to the Landscape Architect for confirmation.

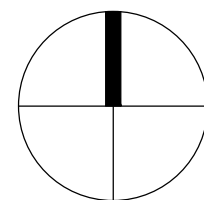
B	For Comment	CS	NM	06.02.2024
A	Development Application	LH	NM	28.07.2023
Issue	Revision Description	Drawn	Check	Date

Legend

SITE IMAGE
Landscape Architects
Level 1, 3-5 Baptist Street
Redfern NSW 2016
Australia
Tel: (61 2) 8332 5600
Fax: (61 2) 9698 2877
www.siteimage.com.au

Client
The GPT Group

Project
West Yiribana Logistics Estate
771-797 Mamre Road,
Kemps Creek NSW



Drawing Name
Landscape Details

Development Application

Scale **As Shown**

Job Number
SS22-5024

Drawing Number

Issue

504 B

GENERAL NOTES

References

All plans and details included in the project documents shall be read in conjunction with this specification. All structural and civil works components of the landscape design shall be referenced to engineers' details and specifications. Read this specification in conjunction with the plant and materials schedule on this drawing. If in doubt about any detail or if conflicts are found in the documents, seek advice.

Workmanship and Materials

The whole of the landscape works shall be carried out by a competent, trained and qualified landscape contractor who is experienced in horticultural practices, landscape construction and planting techniques. The landscape contractor shall hold a current Building Contractors License and/or be a financial member of LNA Landscape Association NSW & ACT or equivalent organisations in other states.

EXISTING TREES

Trees to be Retained and Protected

Identify and mark trees and shrubs to be retained using a suitable non-injurious, easily visible and removable means of identification. Protect from damage the trees and shrubs to be retained, including those beyond the site area, both above and below the ground. If a tree becomes damaged during the works or it is proposed to perform work on a tree, give written notice immediately and obtain instructions.

Work near Trees

Keep the area of the drip-line free from construction material and debris. Do not place bulk materials and harmful materials under or near trees. Do not place spoil from excavations against tree trunks. Prevent wind-blown materials such as cement from harming trees and plants. Do not remove topsoil from, or add topsoil to, the area within the drip-line of trees.

EARTHWORKS

Excavation, Trimming and Filling

Except as otherwise note in the contract, bulk excavation is excluded from the landscape works. Trim and fill the excavated ground surfaces to achieve design levels to accommodate finish materials as detailed. Compact the finished surface as required for the finished ground treatment.

Sub-soil Drainage

Keep the excavated works drained and free of standing water. Allow to supply and install sub-soil drainage pipes as required for the new works to ensure that all gardens are well drained. Connect the sub-soil drainage pipes to the nearest downstream stormwater pits. Include pipe filter socks.

SOFTWORKS

Soil Testing

Undertake at least two (2) soil tests, in locations as advised by Project Manager, and provide results and recommendations for the improvement of plant growth and to adjust the soil to achieve appropriate planting medium (including pit levels) for successful plant growth.

Subsoil

In the instances where impervious subsoils are encountered, excavate all garden beds with trees to bring the subsoil to at least 1200mm below finished design levels. Shape the subsoil to fall to subsoil drains where applicable. Do not excavate within the drip line of trees to be retained. Shape the subsoil to fall to subsoil drains where applicable. Cultivate the subsoil to a further depth of 100mm. Remove stones exceeding 25mm, clods of earth exceeding 50mm, and weeds, rubbish or other deleterious material brought to the surface during cultivation. Do not disturb services or tree roots, if necessary cultivate these areas by hand. During cultivation, thoroughly mix in materials required to be incorporated into the subsoil, as recommended in the soil testing results and to manufacturer's recommendations. Trim the surface to design levels after cultivation.

Topsoil

Import topsoil for the garden and turf areas, unless the topsoil can be provided from material recovered from the site, as recommended in the soil testing results. Spread the topsoil on the prepared subsoil and grade evenly, compact lightly and uniformly in 150mm layers. Avoid differential subsidence and excess compaction and produce a finished topsoil surface which has the following characteristics:

- Finished to design levels, allowing for mulch or turf, which is to finish flush with adjoining hard surfaces such as paths and edge;
- Smooth and free from stones or lumps of soil;
- Graded to drain freely, without ponding, to catchment points;
- Graded evenly to adjoining surfaces; and
- Ready for planting.

Compost

Provide, in accordance with AS 4454, well rotted vegetative material or animal manure, free from harmful chemicals, grass and weed growth.

Fertiliser

Provide proprietary fertilisers, delivered to the site in sealed bags marked to show manufacturer or vendor, weight, fertiliser type, N:P:K ratio, recommended uses and application rates.

Plants

Supply plants in accordance with the landscape drawings and schedules, which have the following characteristics:

- Large healthy root systems, with no evidence of root curl, restriction or damage;
- Vigorous, well established, free from disease and pests, of good form consistent with the species or variety;
- Hardened off, not soft or forced, and suitable for planting in the natural climatic conditions prevailing at the site, and in particular shade conditions;
- Grown in final containers for not less than twelve weeks;
- Trees, unless required to be multi-stemmed, shall have a single leading shoot; and
- Containers shall be free from weeds and of appropriate size in relation to their container.

Plant Installation

Following excavation of the planting hole place and spread 15gms of wetting agent pre-mixed with one (1) litre of water. Place the plant correctly orientated to north or for best presentation. Backfill the planting holes with specified topsoil mixture. Lightly tamp and water to eliminate air pockets. Ensure the topsoil is not placed over the top of the rootball. Keep the plant stem at the same height above the ground as it was above the soil in the container. Apply fertiliser, as recommended in the soil testing results or in accordance with the manufacturer's recommendations around the plants in the soil at the time of planting.

Embankment Stabilisation

Where necessary to prevent soil erosion or soil movement, stabilise embankments. As a minimum this should be on slopes >1:3. Stabilise embankments using biodegradable fibre reinforced with heavy weight polymer mesh. Lay mesh from top to bottom of slope. Install in accordance with manufacturer's specification, including 300 x 300 mm anchor trenches at top and bottom, backfilled with soil over the mesh and compacted, and U-shaped galvanised steel pegs at 1000 mm centres and 250mm centres at edge overlaps. Plant after matting is installed.

Root Barrier

Supply and install root control barriers to all new tree plantings adjacent to walls, paths and all trunk service trenches, where their proximity poses a threat to the stability of the infrastructure. Install in accordance with manufacturer's recommendations.

Mulch

Mulch shall be approved recycled wood fibre or pine bark mulch. Place mulch in all garden beds to a depth of 75mm, after all specified plants are installed. Keep mulch clear of all plant stems and rake to an even surface flush with the surrounding surfaces evenly graded between design surface levels. Over fill to allow mulch to settle to the specified depth.

Stakes and Ties

Stakes shall be durable hardwood, straight, free of knots and twists, pointed at one end, in the following quantities and sizes for each of the various plant pot sizes:

- Plants (>25 lt): 1 off 38 x 38 x 1200mm;
- Semi-advanced plants (>75 lt): 2 off 50x50x 1800mm;
- Advanced (>100 lt): 3 off 50 x 50 x 2400mm.

Turf

Turf shall be delivered to site as 25mm minimum thick cut rolls. Obtain turf from a specialist grower of cultivated turf. Provide turf of even thickness, free from weeds and other foreign matter. Deliver turf to the site within 24 hours of being cut, and lay it within 24 hours of delivery. Prevent it from drying out between cutting and laying. Lay the turf in the following manner:

- In stretcher pattern, joints staggered and close buttet;
- Parallel long sides of level areas, with contours on slopes; &
- To finish flush, after tamping, with adjacent finished surfaces of ground.

IRRIGATION

All proposed landscape areas shall be irrigated.

The irrigation system shall be an automatic fixed drip system, with an irrigation controller self operated via a soil moisture sensor. The system shall be compatible to the type of plant material and rates of water required. Where appropriate adjustable and fully serviceable. The layout of the entire irrigation is to ensure that each individual plant receives the required amount of water to maintain healthy and vigorous growth. The irrigation system shall be such that, component theft, vandalism, over-spray and wetting of paths shall be reduced to a minimum or completely eliminated by the use of drip, pop-up sprinklers and judiciously placed fixed spray emitters. Do not use fine mist type emitters that provide a drifting mist that may wet paths and the buildings.

LANDSCAPE MAINTENANCE

The Landscape Contractor shall rectify defects during installation and that become apparent in the works under normal use for the duration of the contract Defects Liability Period. The Landscape Contractor shall maintain the contract areas by the implementation of industry accepted horticultural practices for 52 weeks. The landscape maintenance works shall include, but not be limited to, the following:

- Replacing failed plants;
- Pruning;
- Insect and pest control;
- Fertilising;
- Stakes and ties;
- Maintaining mulch;
- Mowing and top dressing;
- Irrigation and watering;
- Erosion control; and
- Weeding and rubbish removal.

Maintenance Log Book

Implement and keep a maintenance log book recording when and

what maintenance work has been undertaken and what materials, actions and decisions have been used, implemented and concluded to keep the landscape always looking its best.

Maintenance Activities

Schedule the following activities to occur on a timely basis.

- **Plant replacement** - Replace plants that have failed to mature, die or are damaged. Replacement plants shall be in a similar size and quality and identical species or variety to the plant that has failed. Replacement of plants shall be at the cost of the landscape contractor unless advised otherwise. If the cause of the failure is due to a controllable situation then correct the situation prior to replacing plants.
- **Pruning** - Prune dead wood, broken limbs, dead or infected foliage and as needed to develop strong, healthy plants to achieve the shape and form expected of the plant type.
- **Insect and pest control** - Avoid spraying:
 - if ever possible;
 - in wet weather or if wet weather is imminent;
 - if target plants are still wet after rain;
 - in windy weather; and
 - if non-target species are too close.

Immediately report to the Project Manager any evidence of intensive weed infestation, insect attack or disease amongst plant material. Submit all proposals to apply chemicals and obtain approval before starting this work. When approved, spray with herbicide, insecticide, fungicide as appropriate in accordance with the manufacturers' recommendations. Record in the logbook all relevant details of spraying activities including:

- Product brand / manufacturer's name,
- Chemical / product name,
- Chemical contents,
- Application quantity and rate,
- Date of application and location,
- Results of application, and
- Use approval authority.

- **Fertilising** - Fertilise gardens with a proprietary slow release fertiliser applied in accordance with the manufacturer's directions and recommendations. Record in the logbook all relevant details of fertilising including:
 - Product brand / manufacturer's name,
 - Fertiliser / product name,
 - Application quantity and rate, and
 - Date of application and location.
- **Stakes and ties** - Adjust and replace as required to ensure plants remain correctly staked. Remove those not required at the end of the planting establishment period (Defects Liability Period).
- **Maintaining mulch** - Maintain the surface in a clean, tidy and weed free condition and reinstate the mulch as necessary to ensure correct depth as specified.
- **Mowing and top dressing** - Mow the turf to maintain a grass height of between 30-50mm. Do not remove more than one third of the grass height at any one time. Remove grass clippings from the site after each mowing. Top dress to a maximum of 10mm to fill depressions and hollows in the surface.
- **Irrigation and watering** - Maintain the irrigation system to sure that each individual plant receives the required amount of water to maintain healthy and vigorous growth, adjust and rectify as required.

- **Erosion control** - Where necessary, maintain the erosion control devices in a tidy and weed free condition and reinstate as necessary to ensure control measures are effective where deemed necessary.
- **Weeding and rubbish removal** - During the plant establishment period remove by hand, rubbish and weed growth that may occur or re-occur throughout all planted, mulched and paved areas. The contractor shall target weeds that are capable of producing a major infestation of unwanted plants by seed distribution. Whenever possible, time weed removal to precede flowering and seed set.

GARDEN SOIL SPECIFICATION

The garden soil is intended for mass planting of grasses, woody and herbaceous perennials in gardens other than on structure. Garden soil shall be used where it will not be subject to compaction under foot traffic shall consist of sandy loam to clay loam topsoil mix. Drainage is an essential requirement of this heavier soil mix. Subsoil drains shall be installed into the lower levels of the soil profile to collect excess subsoil water. This soil is intended to be direct tube and pot specimen planted up to 45 litre and should have the characteristics listed in Table A6 below..

Table A6

Physical components - Sandy loam soil or site won topsoil 70-100% by volume
Example:
8 parts washed sand
2 parts sandy loam
1 part AS4454 compostComposted soil conditioner (conforming to AS4454) 0-30% by volumeFertilisersLime and/or dolomite 2 kg/m3 at mixingExample
+ Lime and/or dolomite
+ NPK
• + Trace elementsBalanced compound NPK turf starter fertiliser 0.5 kg/100m2 after placementMinor and trace elements 300 g/m3 at mixing

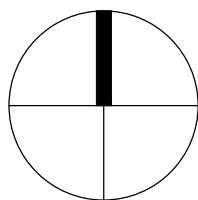
MAINTENANCE PROGRAM									
Table	Activity	Frequency						Action	
		D	W	2W	3W	M	3or6M		
		Daily, Weekly, Monthly							
1	Logbook	+		+		+		Complete a logbook entry every day at site and at least every two weeks. All actions listed below require a logbook entry. Upon request, make the logbook available for inspection. Submit copies of new entries in the logbook to the Contract Administrator on a monthly basis. Please note that more frequent, short, occasional inspection should result in less maintenance work when problems are observed earlier than they might otherwise have been seen.	
2	Plant replacement			+		+		Inspect and replace failed plants within 2 weeks of observation of failure. Match species, size (original) and location of new with old.	
3	Mulch			+		+		Inspect and replace mulch deficiencies within 2 weeks of observation. Prior to placing new mulch aerate the soil by fork turning to a depth of at least 100mm, roughly level the soil and then place mulch. Do not disturb major plant roots while aerating soil.	
4	Erosion control			+				Inspect every two weeks and repair ground, soil and mulch immediately. Maintain erosion control device as necessary.	
5	Stakes and ties			+				Inspect every two weeks, adjust and/or replace as necessary but remove as plants mature and are able to support themselves.	
6	Weed and rubbish removal			+				Inspect and remove immediately upon observation. Leave no waste on site. Dispose of waste material at a designated waste disposal site.	
7	Pruning			+				Inspect every 2 weeks and prune as necessary to remove dead wood, improve plant shape and promote healthy vigorous new growth.	
8	Spraying			+				Inspect every 2 weeks and action as necessary. Do not spray if other non-chemical methods will satisfy the need to remove insects. Spray for disease control only when absolutely necessary.	
9	Urgent works		+					Complete within 1 week (7 days) of notification. Inspect and clear drains.	
10	Planting and fertilising			+			3m+	Inspect every 2 weeks and remove spent flowers and dead stalks as they become apparent. Fertilise gardens every 3 months or other frequency in accordance with fertiliser manufacturer's directions.	
11	Watering	+		+				Water when and where necessary every day at site and at least every 2 weeks generally. Do not allow soil and plants to dehydrate. Allow for prolonged rain, windy and dry periods. Water in the early morning or late afternoon to avoid excessive evaporation during the heat of the day.	
12	Mowing, top-dressing and edging			+		+	6m+	Summer fortnightly. Winter monthly. Top-dress 6 monthly.	

NOT FOR CONSTRUCTION

© 2021 Site Image (NSW) Pty Ltd ABN 44 801 262 380 as agent for Site Image NSW Partnership. All rights reserved. This drawing is copyright and shall not be reproduced or copied in any form or by any means (graphic, electronic or mechanical including photocopy) without the written permission of Site Image (NSW) Pty Ltd Any license, expressed or implied, to use this document for any purpose what so ever is restricted to the terms of the written agreement between Site Image (NSW) Pty Ltd and the instructing party.

The contractor shall check and verify all work on site (including work by others) before commencing the landscape installation. Any discrepancies are to be reported to the Project Manager or Landscape Architect prior to commencing work. Do not scale this drawing. Any required dimensions not shown shall be referred to the Landscape Architect for confirmation.

Legend



S I T E I M A G E

Landscape Architects
Level 1, 3-5 Baptist Street
Redfern NSW 2016
Australia
Tel: (61 2) 8332 5600
Fax: (61 2) 9698 2877
www.siteimage.com.au

Client
The GPT Group

Project
West Yiribana Logistics Estate
771-797 Mamre Road,
Kemps Creek NSW

Drawing Name
Landscape Specification

Development Application

Scale **As Shown**

Job Number

SS22-5024

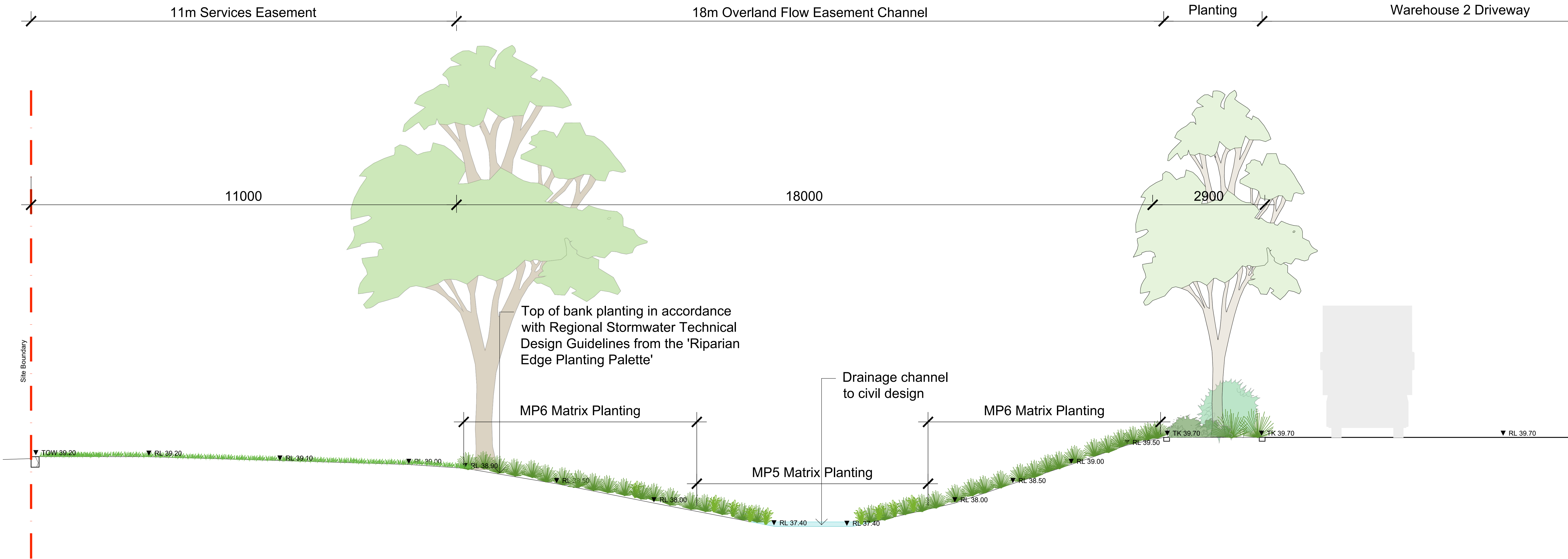
Drawing Number

Issue

505 A

A Development Application
Issue Revision Description

LH NM 28.07.2023
Drawn Check Date



01 Channel Basin
601 1:50

NOT FOR CONSTRUCTION

© 2021 Site Image (NSW) Pty Ltd ABN 44 801 262 380 as agent for Site Image NSW Partnership. All rights reserved. This drawing is copyright and shall not be reproduced or copied in any form or by any means (graphic, electronic or mechanical including photocopy) without the written permission of Site Image (NSW) Pty Ltd. Any license, expressed or implied, to use this document for any purpose what so ever is restricted to the terms of the written agreement between Site Image (NSW) Pty Ltd and the instructing party.

The contractor shall check and verify all work on site (including work by others) before commencing the landscape installation. Any discrepancies are to be reported to the Project Manager or Landscape Architect prior to commencing work. Do not scale this drawing. Any required dimensions not shown shall be referred to the Landscape Architect for confirmation.

C	Development Application	LH	NM	28.07.2023
B	Development Application	CK	NM	15.12.2022
A	Development Application	LW	NM	25.08.2022
Issue	Revision Description	Drawn	Check	Date

Legend



Client
The GPT Group

Project
West Yiribana Logistics Estate
771-797 Mamre Road,
Kemps Creek NSW

Drawing Name
Landscape Sections

Development Application

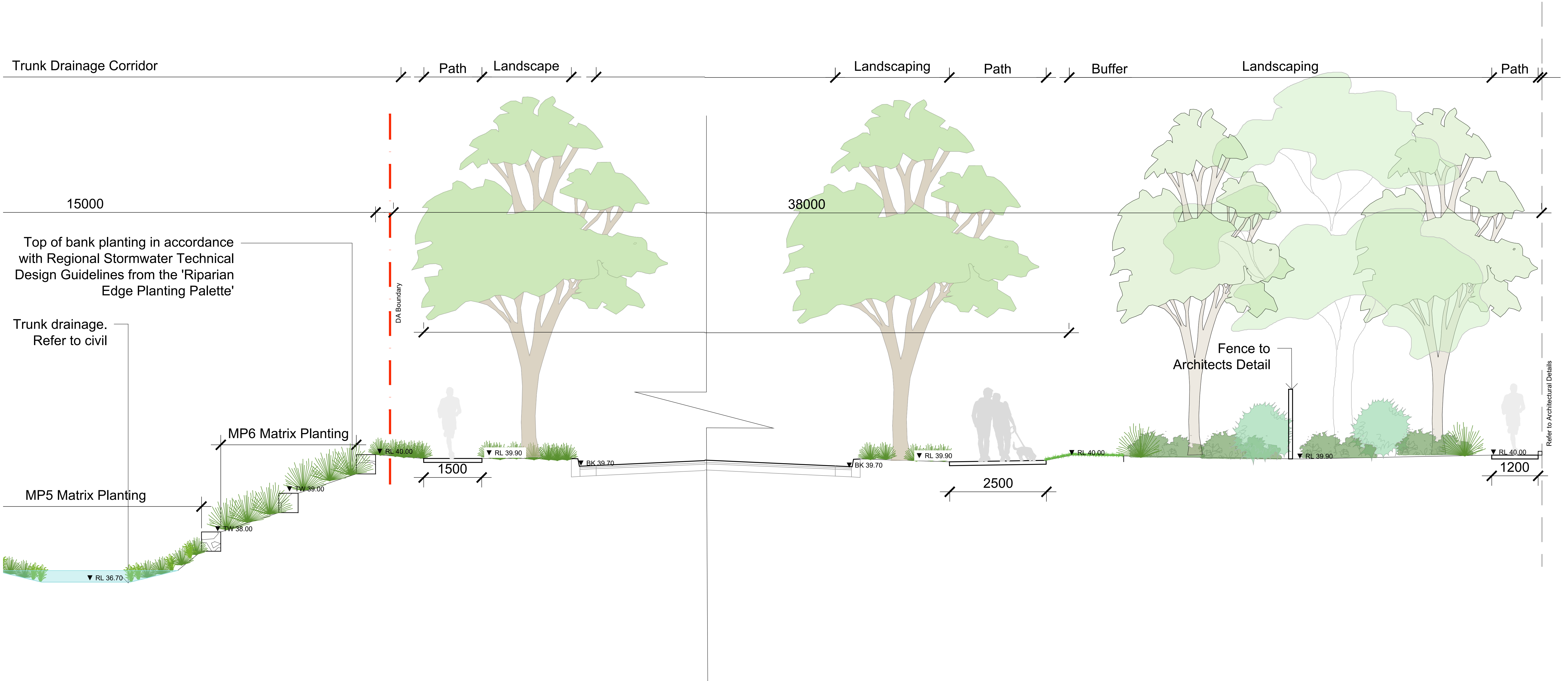
Scale As Shown

Job Number
SS22-5024

Drawing Number

Issue

601 C



NOT FOR CONSTRUCTION

© 2021 Site Image (NSW) Pty Ltd ABN 44 801 262 380 as agent for Site Image NSW Partnership. All rights reserved. This drawing is copyright and shall not be reproduced or copied in any form or by any means (graphic, electronic or mechanical including photocopy) without the written permission of Site Image (NSW) Pty Ltd Any license, expressed or implied, to use this document for any purpose what so ever is restricted to the terms of the written agreement between Site Image (NSW) Pty Ltd and the instructing party.

The contractor shall check and verify all work on site (including work by others) before commencing the landscape installation. Any discrepancies are to be reported to the Project Manager or Landscape Architect prior to commencing work. Do not scale this drawing. Any required dimensions not shown shall be referred to the Landscape Architect for confirmation.

C	Development Application	LH	NM	28.07.2023
B	Development Application	CK	NM	15.12.2022
A	Development Application	LW	NM	25.08.2022
Issue	Revision Description	Drawn	Check	Date

Legend



Client
The GPT Group

Project
West Yiribana Logistics Estate
771-797 Mamre Road,
Kemps Creek NSW

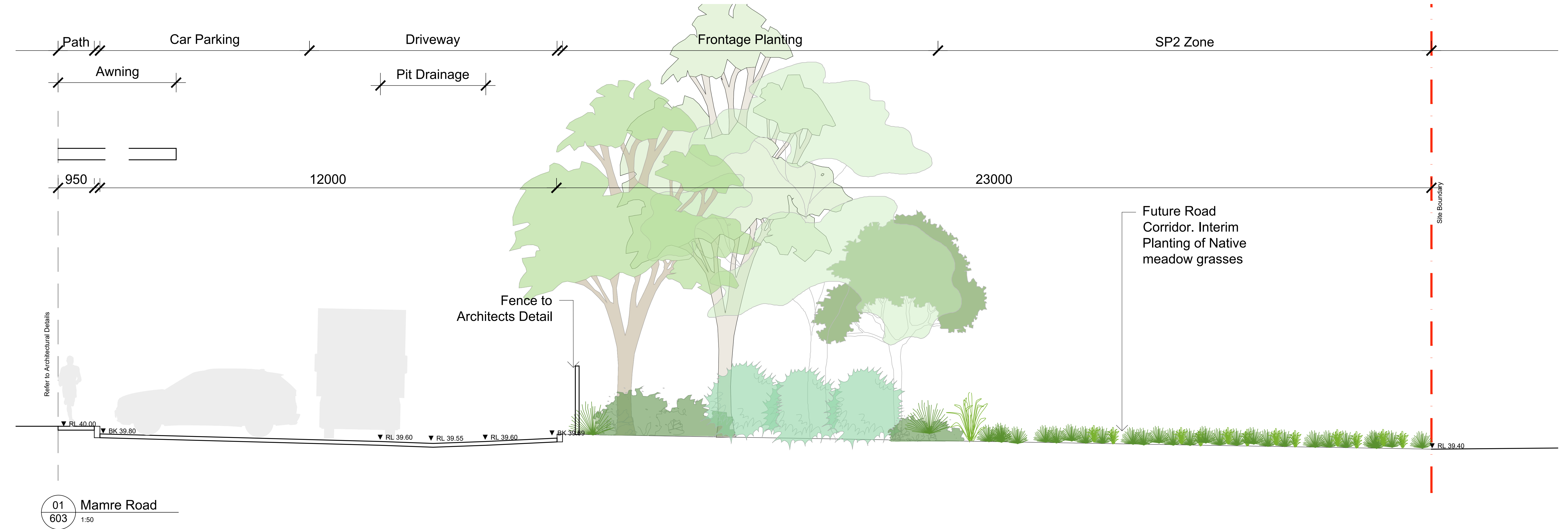
Drawing Name
Landscape Sections

Development Application

Scale **As Shown**

Job Number **SS22-5024**

Drawing Number **602** Issue **C**



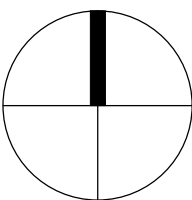
NOT FOR CONSTRUCTION

© 2021 Site Image (NSW) Pty Ltd ABN 44 801 262 380 as agent for Site Image NSW Partnership. All rights reserved. This drawing is copyright and shall not be reproduced or copied in any form or by any means (graphic, electronic or mechanical including photocopy) without the written permission of Site Image (NSW) Pty Ltd. Any license, expressed or implied, to use this document for any purpose what so ever is restricted to the terms of the written agreement between Site Image (NSW) Pty Ltd and the instructing party.

The contractor shall check and verify all work on site (including work by others) before commencing the landscape installation. Any discrepancies are to be reported to the Project Manager or Landscape Architect prior to commencing work. Do not scale this drawing. Any required dimensions not shown shall be referred to the Landscape Architect for confirmation.

B	Development Application	CK	NM	15.12.2022
A	Development Application	LW	NM	25.08.2022
Issue	Revision Description	Drawn	Check	Date

Legend



S I T E I M A G E

Landscape Architects

Level 1, 3-5 Baptist Street
Redfern NSW 2016
Australia

Tel: (61 2) 8332 5600
Fax: (61 2) 9698 2877
www.siteimage.com.au

Client
The GPT Group

Project
West Yiribana Logistics Estate
771-797 Mamre Road,
Kemps Creek NSW

Drawing Name
Landscape Sections

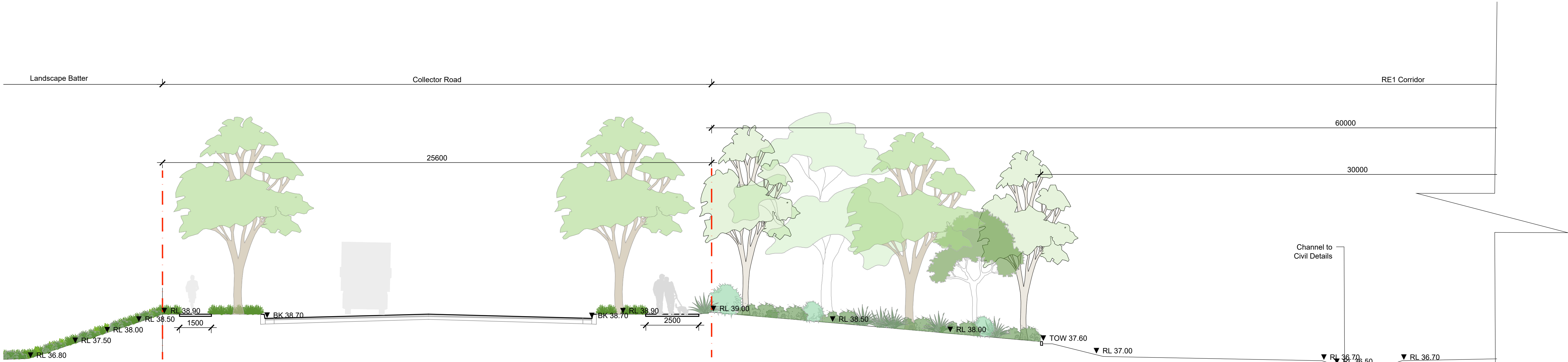
Development Application

Scale **As Shown**

Job Number **SS22-5024**

Drawing Number **603**

Issue **B**



01 RE1 Corridor
604 1:100



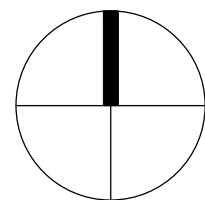
NOT FOR CONSTRUCTION

© 2021 Site Image (NSW) Pty Ltd ABN 44 801 262 380 as agent for Site Image NSW Partnership. All rights reserved. This drawing is copyright and shall not be reproduced or copied in any form or by any means (graphic, electronic or mechanical including photocopy) without the written permission of Site Image (NSW) Pty Ltd. Any license, expressed or implied, to use this document for any purpose what so ever is restricted to the terms of the written agreement between Site Image (NSW) Pty Ltd and the instructing party.

The contractor shall check and verify all work on site (including work by others) before commencing the landscape installation. Any discrepancies are to be reported to the Project Manager or Landscape Architect prior to commencing work. Do not scale this drawing. Any required dimensions not shown shall be referred to the Landscape Architect for confirmation.

C	Development Application	LH	NM	28.07.2023
B	Development Application	CK	NM	15.12.2022
A	Development Application	LW	NM	25.08.2022
Issue	Revision Description	Drawn	Check	Date

Legend



SITE IMAGE
Landscape Architects
Level 1, 3-5 Baptist Street
Redfern NSW 2016
Australia
Tel: (61 2) 8332 5600
Fax: (61 2) 9698 2877
www.siteimage.com.au

Client
The GPT Group

Project
West Yiribana Logistics Estate
771-797 Mamre Road,
Kemps Creek NSW

Drawing Name
Landscape Sections

Development Application

Scale As Shown

Job Number

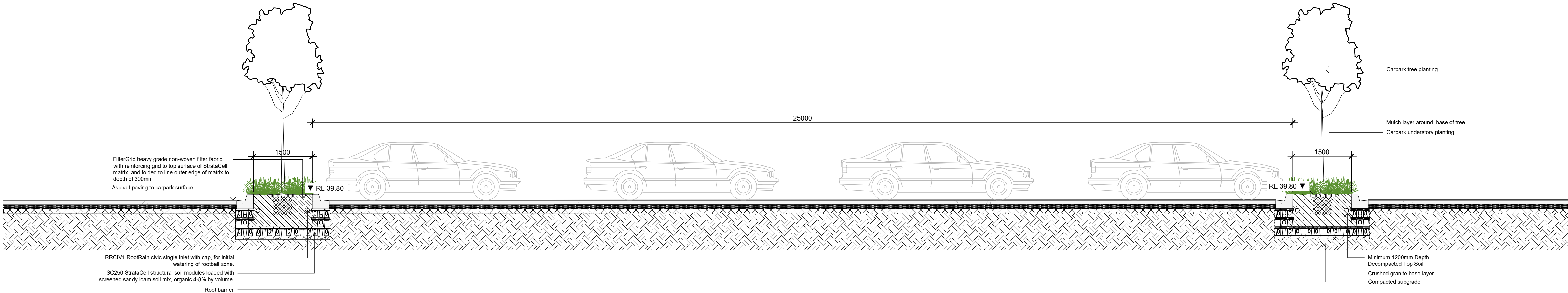
SS22-5024

Drawing Number

604

Issue

C



01 Carpark Section
605 1:50

NOT FOR CONSTRUCTION

© 2021 Site Image (NSW) Pty Ltd ABN 44 801 262 380 as agent for Site Image NSW Partnership. All rights reserved. This drawing is copyright and shall not be reproduced or copied in any form or by any means (graphic, electronic or mechanical including photocopy) without the written permission of Site Image (NSW) Pty Ltd. Any license, expressed or implied, to use this document for any purpose what so ever is restricted to the terms of the written agreement between Site Image (NSW) Pty Ltd and the instructing party.

The contractor shall check and verify all work on site (including work by others) before commencing the landscape installation. Any discrepancies are to be reported to the Project Manager or Landscape Architect prior to commencing work. Do not scale this drawing. Any required dimensions not shown shall be referred to the Landscape Architect for confirmation.

Legend

S I T E I M A G E
Landscape Architects
Level 1, 3-5 Baptist Street
Redfern NSW 2016
Australia
Tel: (61 2) 8332 5600
Fax: (61 2) 9698 2877
www.siteimage.com.au

Client
The GPT Group

Project
West Yiribana Logistics Estate
771-797 Mamre Road,
Kemps Creek NSW

Drawing Name
Landscape Sections

Development Application

Scale As Shown

Job Number

SS22-5024

Drawing Number

Issue

605 A

A Development Application
Issue Revision Description

LH NM 28.07.2023
Drawn Check Date